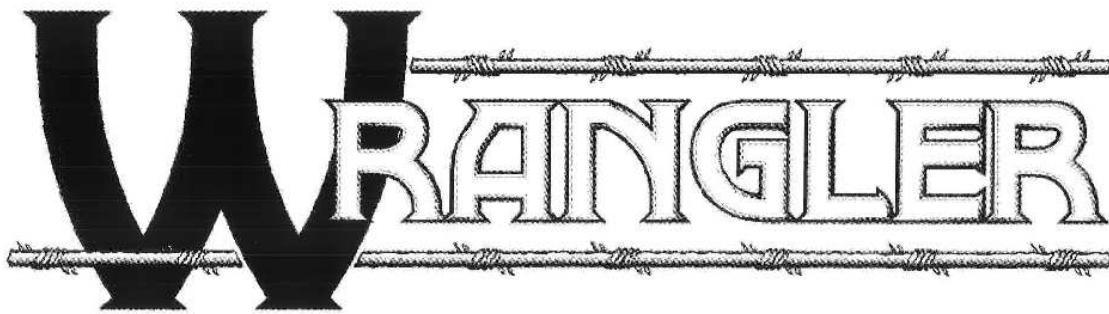




Repair Parts Manual for:



SR-125

Zero Turn Radius Mower

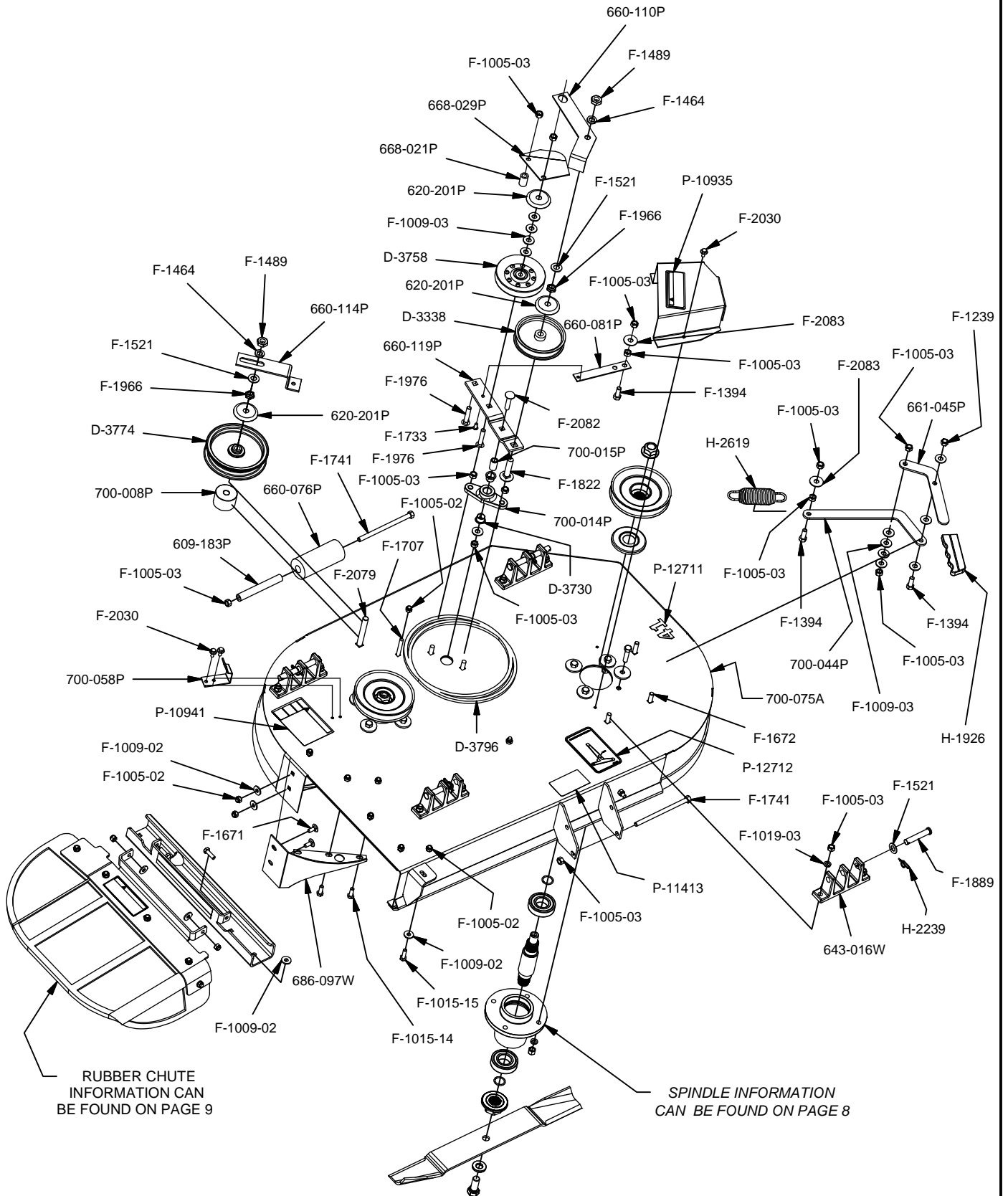
COUNTRY CLIPPER
WRANGLER - SR125
ZERO TURN RADIUS MOWER

TABLE OF CONTENTS

41" MOWER DECK.....	PAGE 2 - 5
48" MOWER DECK.....	PAGE 6 & 7
SPINDLE ASSEMBLY.....	PAGE 8
RUBBER CHUTE ASSEMBLY.....	PAGE 9
DECK LIFT ASSEMBLY.....	PAGE 10
FRONT END ASSEMBLY.....	PAGE 11
FRAME AND SIDE ASSEMBLY.....	PAGE 12
SEAT AND RELATED PARTS.....	PAGE 13
JOYSTICK ASSEMBLY.....	PAGE 14
JOYSTICK STEERING ASSEMBLY.....	PAGE 15
BRAKE ASSEMBLY.....	PAGE 16
FUEL TANK ASSEMBLY.....	PAGE 17
UNDERSIDE OF MOTOR MOUNT.....	PAGE 18
MOTOR AND MOUNT ASSEMBLY.....	PAGE 19
MOTOR AND TRANSAXLE.....	PAGE 20
REAR WHEEL AND SIDE PANEL.....	PAGE 21
WIRE HARNESS & BATTERY.....	PAGE 22

41" MOWER DECK

NOTE: FOR MOWER SERIAL NUMBERS **700A001** THROUGH **700A399**:
PLEASE REFER TO THIS PAGE FOR DECK INFORMATION.



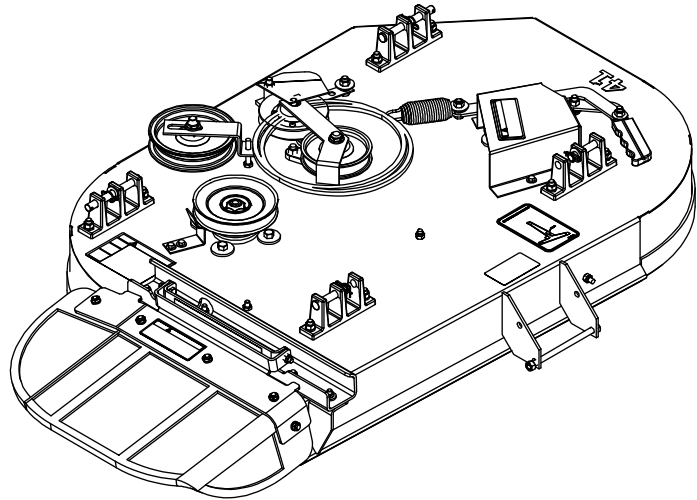
RUBBER CHUTE
INFORMATION CAN
BE FOUND ON PAGE 9

SPINDLE INFORMATION
CAN BE FOUND ON PAGE 8

* PART DESCRIPTIONS ARE ON THE NEXT PAGE.

41" MOWER DECK

NOTE: FOR MOWER SERIAL NUMBERS **700A001** THROUGH **700A399**:
PLEASE REFER TO THIS PAGE FOR DECK INFORMATION.

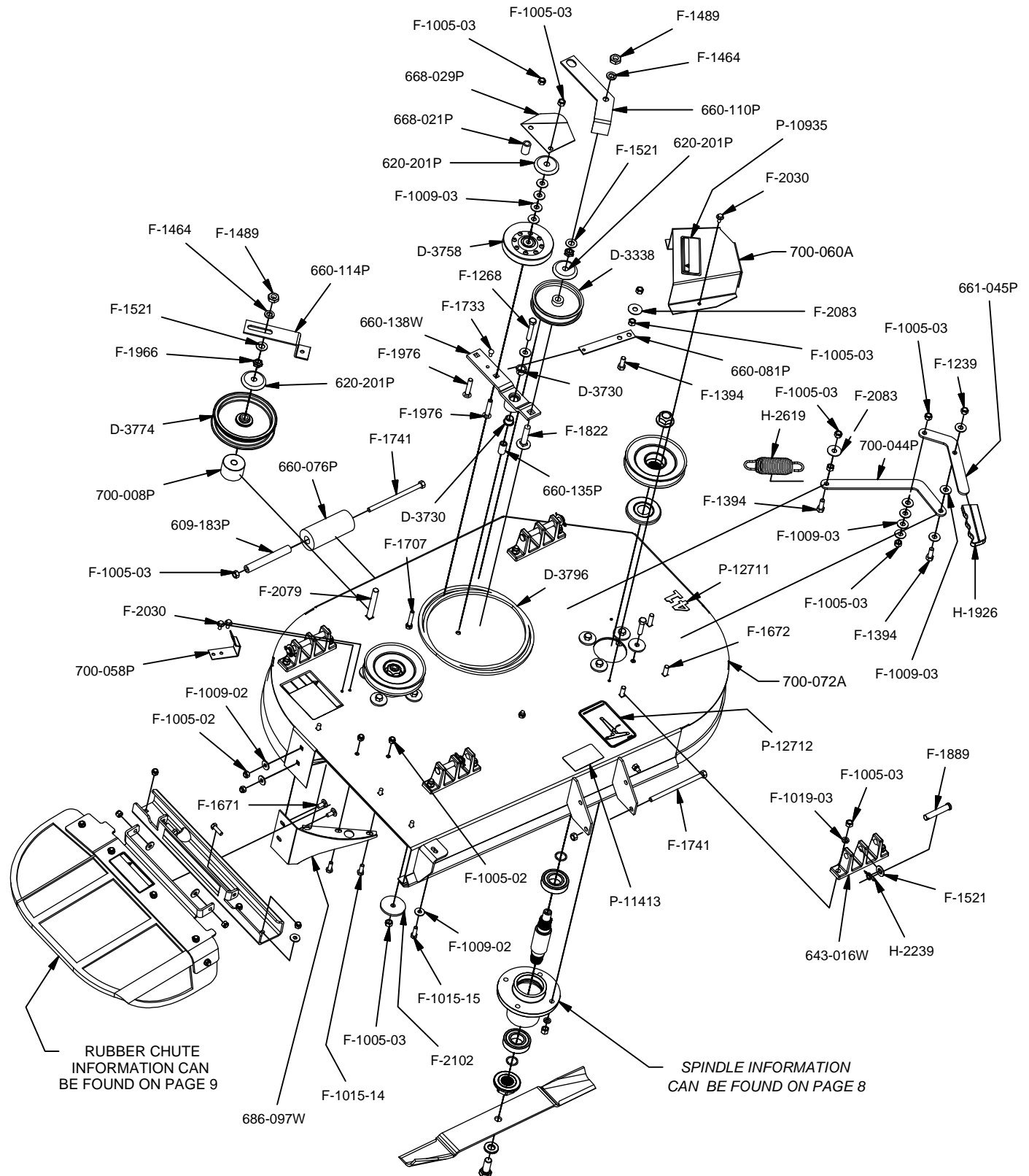


COMPLETE DECK ASSEMBLY **700A-002A**

PART NUMBER	DESCRIPTION	PART NUMBER	DESCRIPTION
609-183P	BUSHING	F-1177	3/8-16 x 1-1/2" Carriage Bolt
620-201P	WASHER, BEARING CAP	F-1239	3/8 LOCKNUT
643-016W	Hanger Weldment	F-1274	3/8-16 X 1" CARRIAGE BOLT
660-076P	ROLLER	F-1394	3/8-16 x 1" Capscrew
660-081P	EXTENSION FOR SPRING	F-1521	1/2" WASHER, CUSTOM
660-110P	BELT KEEPER, B BELT	F-1572	3/8-24 x 1.5" Capscrew
660-114P	BELT KEEPER, SINGLE END	F-1573	3/8-24 LOCKNUT
660-119P	IDLER ARM 1/2" OFFSET	F-1671	5/16-18 x 3/4" CARRIAGE BOLT
661-045P	ARM, BELT TENSION	F-1672	3/8-16 x 1-1/4" Carriage Bolt
668-021P	SPACER, BELT GUARD	F-1707	5/16-18 x 2 1/4" CARRIAGE BOLT,
668-029P	BELT GUARD	F-1733	1/4" x 1/2" DRIVE SCREW
686-097W	BAFFLE, DISCHARGE WLDT	F-1741	3/8-16 x 6" Capscrew
700-008P	SPACER 2.000OD X .531ID X 1.375HT	F-1822	1/2-13 X 2-1/4" CARRIAGE BOLT
700-014P	DOUBLE IDLER MOUNT .956 HGT	F-1889	1/2 x 2-5/8" Clevis Pin
700-015P	MOUNTING PIN	F-1930	Carg Bolt: Short NK: 5/16-18 X 3/4" L GR5
700-044P	ARM, SPRING TENSION	F-1966	1/2-13 THIN NYLOC NUT
700-058P	GUIDE, BELT 41"	F-1976	3/8-16 x 2" Carriage Bolt
700-060A	COVER, PULLEY LH	F-2030	1/4 x 5/8 Self Tapping Capscrew
700-075A	41" DECK WELDMENT WITH DECALS	F-2073	HHCS,5/8-11X1.50,GR8,YZ
D-3338	Pulley flat idler 1/2" Bore 4"	F-2078	NUT,3/4-16,TOP LOCK,GR-GT,YZ
D-3730	Flanged Bushing 5/8" Bore	F-2079	CARRIAGE BOLT 1/2-13 X 3-3/4"
D-3758	PULLEY V-IDLER 4.48 O.D. 3/8 HOLE	F-2082	3/8-16 X 1 3/4" CARRIAGE BOLT
D-3774	IDLER PULLEY 5"	F-2083	WASHER, 3/8 FENDER
D-3796	"V"-BELT B-124 DAYCO #7-9537	H-1926	1/4"x1" Handle Grip
D-3855	BRG,BALL,6206,DOUBLE LIP SEALS	H-2239	1/2" Rue Ring
F-1005-02	5/16-18 Nyloc Nut	H-2240	1/2" x 4-1/2" Clevis Pin
F-1005-03	3/8-16 Stover Nut	H-2619	SPRING,5 X 1-1/2,TAPERED ENDS
F-1009-02	5/16" Flat Washer	P-10935	Decal, WARNING
F-1009-03	3/8" Flat Washer	P-10941	DECAL "DANGER ROTATING BLADES"
F-1015-14	5/16-18 x 7/8" Capscrew	P-11413	DECAL, HOIST POINT
F-1015-15	5/16-18 x 1" Capscrew	P-12711	DECAL, DECK SIZE, 41
F-1019-03	3/8" LOCKWASHER	P-12712	DECAL WRANGLER BELT ROUTING
F-1125	5/16-18 Stover Nut		

41" MOWER DECK

NOTE: FOR MOWER SERIAL NUMBERS BEGINNING WITH **700A400** AND CONTINUING IN SEQUENTIAL ORDER: PLEASE REFER TO THIS PAGE FOR DECK INFORMATION.



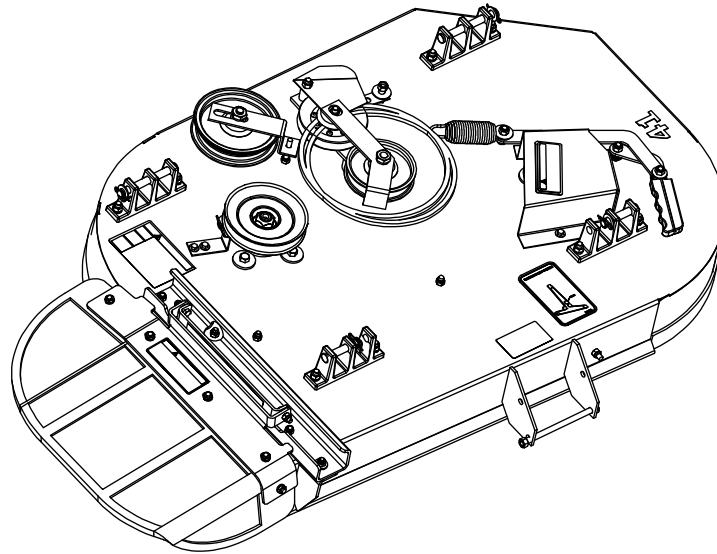
RUBBER CHUTE INFORMATION CAN BE FOUND ON PAGE 9

SPINDLE INFORMATION CAN BE FOUND ON PAGE 8

* PART DESCRIPTIONS ARE ON THE NEXT PAGE.

41" MOWER DECK

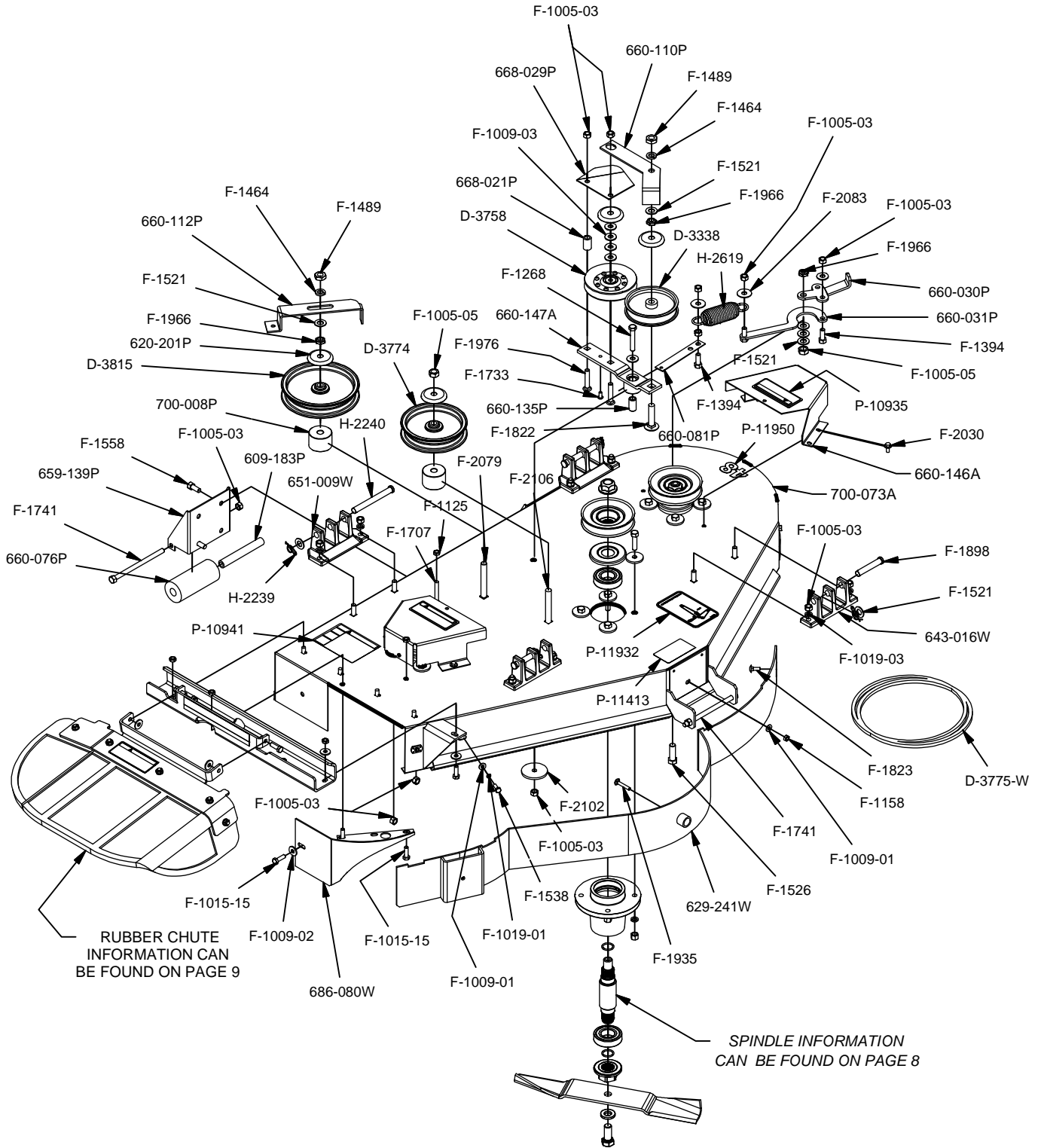
NOTE: FOR MOWER SERIAL NUMBERS BEGINNING WITH **700A400** AND CONTINUING IN SEQUENTIAL ORDER: PLEASE REFER TO THIS PAGE FOR DECK INFORMATION.



COMPLETE DECK ASSEMBLY
700C-002A

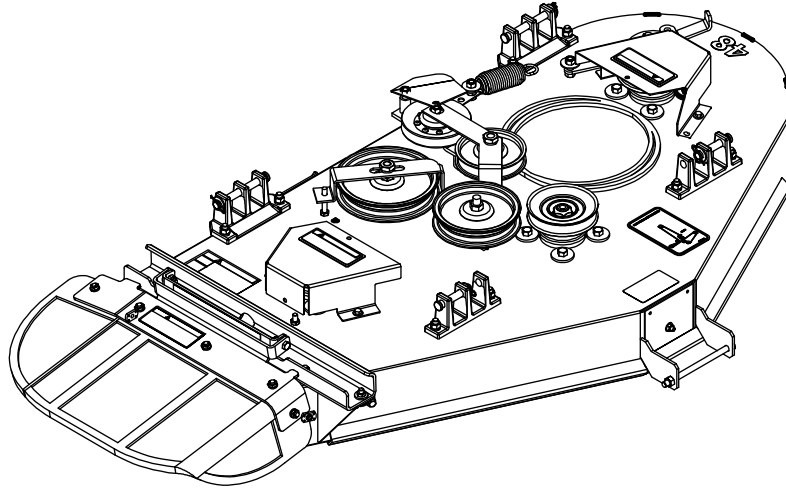
PART NUMBER	DESCRIPTION	PART NUMBER	DESCRIPTION
609-183P	BUSHING	F-1239	3/8 LOCKNUT
620-201P	WASHER, BEARING CAP	F-1268	3/8-16 x2-1/4" Capscrew
643-016W	Hanger Weldment	F-1464	1/2" LOCKWASHER
660-076P	ROLLER	F-1489	1/2-13 Hex Jam Nut
660-081P	EXTENSION FOR SPRING	F-1521	1/2" WASHER, CUSTOM
660-110P	BELT KEEPER, B BELT	F-1573	3/8-24 LOCKNUT
660-114P	BELT KEEPER, SINGLE END	F-1671	5/16-18 x 3/4" CARRIAGE BOLT
660-135P	MOUNTING PIN	F-1672	3/8-16 x 1-1/4" Carraige Bolt
660-138W	IDLER ARM WLDT, 1/2" OFFSET	F-1707	5/16-18 x 2 1/4" CARRIAGE BOLT,
661-045P	ARM, BELT TENSION	F-1733	1/4" x 1/2" DRIVE SCREW
668-021P	SPACER, BELT GUARD	F-1741	3/8-16 x 6" Capscrew
668-029P	BELT GUARD	F-1822	1/2-13 X 2-1/4" CARRIAGE BOLT
686-097W	BAFFLE, DISCHARGE WLDT	F-1889	1/2 x 2-5/8" Clevis Pin
700-008P	SPACER 2.00OD X .531ID X 1.375HT	F-1930	Carg Bolt: Short NK: 5/16-18 X 3/4" L GR5
700-044P	ARM, SPRING TENSION	F-1966	1/2-13 THIN NYLOC NUT
700-058P	GUIDE, BELT 41"	F-1976	3/8-16 x 2" Carraige Bolt
700-060A	PULLEY COVER ASSEMBLY	F-2030	1/4 x 5/8 Self Tapping Capscrew
700-072A	41" DECK WELDMENT WITH DECALS	F-2073	HHCS,5/8-11X1.50,GR8,YZ
D-3338	Pulley flat idler 1/2" Bore 4"	F-2078	NUT,3/4-16,TOP LOCK,GR-GT,YZ
D-3730	Flanged Bushing 5/8" Bore	F-2079	CARRIAGE BOLT 1/2-13 X 3-3/4"
D-3758	PULLEY V-IDLER 4.48 O.D. 3/8 HOLE	F-2083	WASHER, 3/8 FENDER
D-3774	IDLER PULLEY 5"	F-2102	WASHER.406ID X 2.25OD X 7GA THK
D-3796	"V"-BELT B-124 DAYCO #7-9537	H-1926	1/4"x1" Handle Grip
D-3867	BRG,BALL,6206,F-SEALS	H-2239	1/2" Rue Ring
F-1005-02	5/16-18 Nyloc Nut	H-2240	1/2" x 4-1/2" Clevis Pin
F-1005-03	3/8-16 Stover Nut	H-2619	SPRING,5 X 1-1/2,TAPERED ENDS
F-1009-02	5/16" Flat Washer	P-10935	Decal, WARNING
F-1009-03	3/8" Flat Washer	P-10941	DECAL "DANGER ROTATING BLADES"
F-1015-14	5/16-18 x 7/8" Capscrew	P-11413	DECAL, HOIST POINT
F-1015-15	5/16-18 x 1" Capscrew	P-12711	DECAL, DECK SIZE, 41
F-1019-03	3/8" LOCKWASHER	P-12712	DECAL WRANGLER BELT ROUTING
F-1177	3/8-16 x 1-1/2" Carraige Bolt		

48" MOWER DECK



* PART DESCRIPTIONS ARE ON THE NEXT PAGE.

48" MOWER DECK



COMPLETE DECK ASSEMBLY **700B-002A**

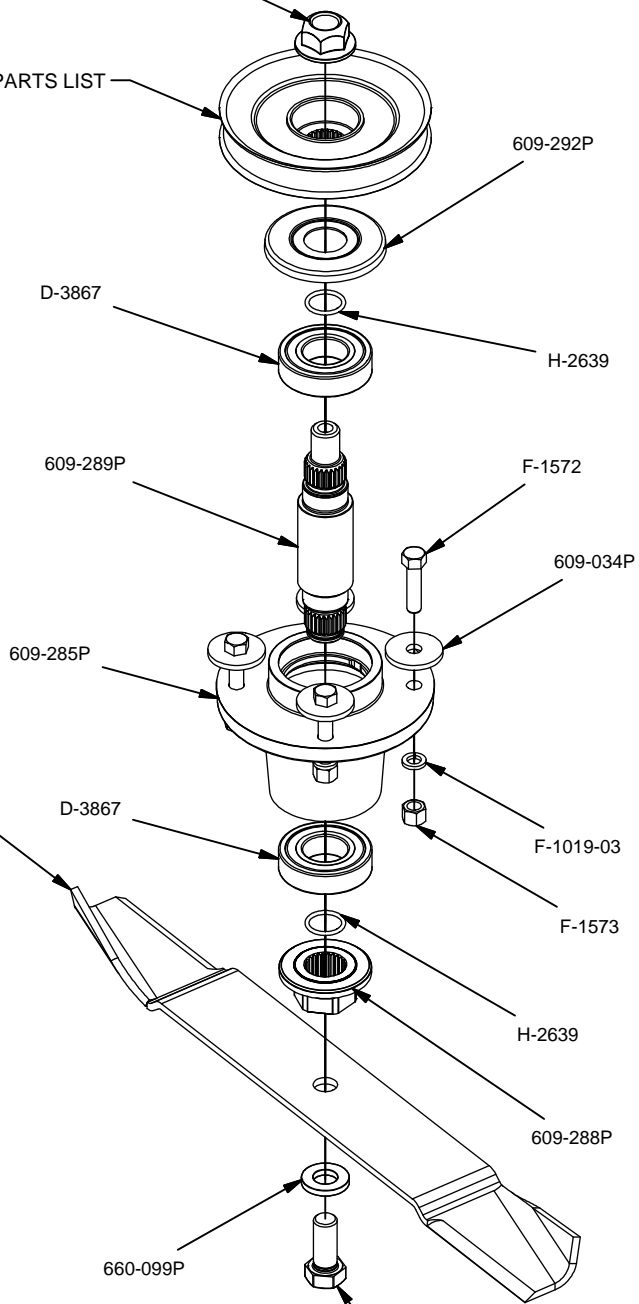
PART NUMBER	DESCRIPTION	PART NUMBER	DESCRIPTION
609-183P	BUSHING	F-1268	3/8-16 x2-1/4" Capscrew
620-201P	WASHER, BEARING CAP	F-1394	3/8-16 x 1" Capscrew
629-241W	Baffle Wldt. 48"	F-1464	1/2" LOCKWASHER
643-016W	Hanger Weldment	F-1489	1/2-13 Hex Jam Nut
651-009W	CASTING,HANGER,WIDE BASE	F-1521	1/2" WASHER, CUSTOM
659-139P	SCALPER BRACKET	F-1526	1/2-13 x1-1/2" Capscrew
660-030P	Belt Tightner Handle	F-1538	1/4-20 x 3/4" Capscrew
660-031P	Belt Tightner Arm	F-1558	3/8-16 x 7/8" Capscrew
660-076P	ROLLER	F-1572	3/8-24 x 1.5" Capscrew
660-081P	EXTENSION FOR SPRING	F-1573	3/8-24 LOCKNUT
660-110P	BELT KEEPER, B BELT	F-1671	5/16-18 x 3/4" CARRIAGE BOLT
660-112P	BELT KEEPER	F-1672	3/8-16 x 1-1/4" Carraige Bolt
660-135P	MOUNTING PIN	F-1707	5/16-18 x 2 1/4" CARRIAGE BOLT,
660-146A	PULLEY COVER WITH DECAL	F-1733	1/4" x 1/2" DRIVE SCREW
660-147A	IDLER ARM ASSEMBLY	F-1741	3/8-16 x 6" Capscrew
668-021P	SPACER, BELT GUARD	F-1822	1/2-13 X 2-1/4" CARRIAGE BOLT
668-029P	BELT GUARD	F-1823	Carriage Bolt, 1/4 X 3/4"
686-080W	SPLITTER BAFFLE	F-1898	1/2 x 2-3/4" Clevis Pin
700-008P	SPACER 2.000OD X .531ID X 1.375HT	F-1935	CARRIAGE BOLT, 1/4 X 1-1/2"
700-073A	48" DECK WELDMENT WITH DECALS	F-1966	1/2-13 THIN NYLOC NUT
D-3338	Pulley flat idler 1/2" Bore 4"	F-1976	3/8-16 x 2" Carraige Bolt
D-3758	PULLEY V-IDLER 4.48 O.D. 3/8 HOLE	F-2030	1/4 x 5/8 Self Tapping Capscrew
D-3774	IDLER PULLEY 5"	F-2073	HHCS,5/8-11X1.50,GR8,YZ
D-3775-W	BELT, B-158	F-2078	NUT,3/4-16,TOP LOCK,GR-GT,YZ
D-3815	IDLER PULLEY 6"	F-2079	CARRIAGE BOLT 1/2-13 X 3-3/4"
F-1005-02	5/16-18 Nyloc Nut	F-2083	WASHER, 3/8 FENDER
F-1005-03	3/8-16 Stover Nut	F-2102	WASHER.406ID X 2.25OD X 7GA THK
F-1005-05	1/2-13 Stover Nut	F-2106	1/2-13 X 3-1/2" CARRIAGE BOLT
F-1009-01	1/4" Flat Washer	H-2239	1/2" Rue Ring
F-1009-02	5/16" Flat Washer	H-2240	1/2" x 4-1/2" Clevis Pin
F-1009-03	3/8" Flat Washer	H-2619	SPRING,5 X 1-1/2,TAPERED ENDS
F-1015-15	5/16-18 x 1" Capscrew	P-10935	Decal, WARNING
F-1019-01	1/4" LockWasher	P-10941	DECAL "DANGER ROTATING BLADES"
F-1019-03	3/8" LOCKWASHER	P-11413	DECAL, HOIST POINT
F-1125	5/16-18 Stover Nut	P-11932	DECAL, JAZEE DECK BELT ROUTING
F-1158	1/4-20 Stover Nut	P-11950	DECAL, DECK SIZE, 48

SPINDLE ASSEMBLY

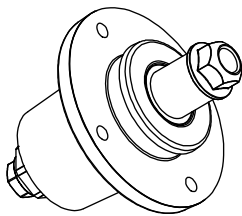
TORQUE TO 100 FT-LB
F-2078

SEE PULLEY & BLADE PARTS LIST

Pulley and Blade Parts List	
PART NUMBER	DESCRIPTION
668-037P	48" DECK PULLEY
668-039P	41" DECK PULLEY
H-2649	41" DECK FUSION HIGH LIFT BLADE
H-2653	48" DECK HIGH LIFT (STD. BLADE)
H-2655	41" DECK HIGH LIFT (STD. BLADE)
H-2659	48" DECK LOW LIFT BLADE
H-2661	41" DECK LOW LIFT BLADE
H-2665	48" DECK GATOR BLADE
H-2667	41" DECK GATOR BLADE



SEE PULLEY & BLADE PARTS LIST

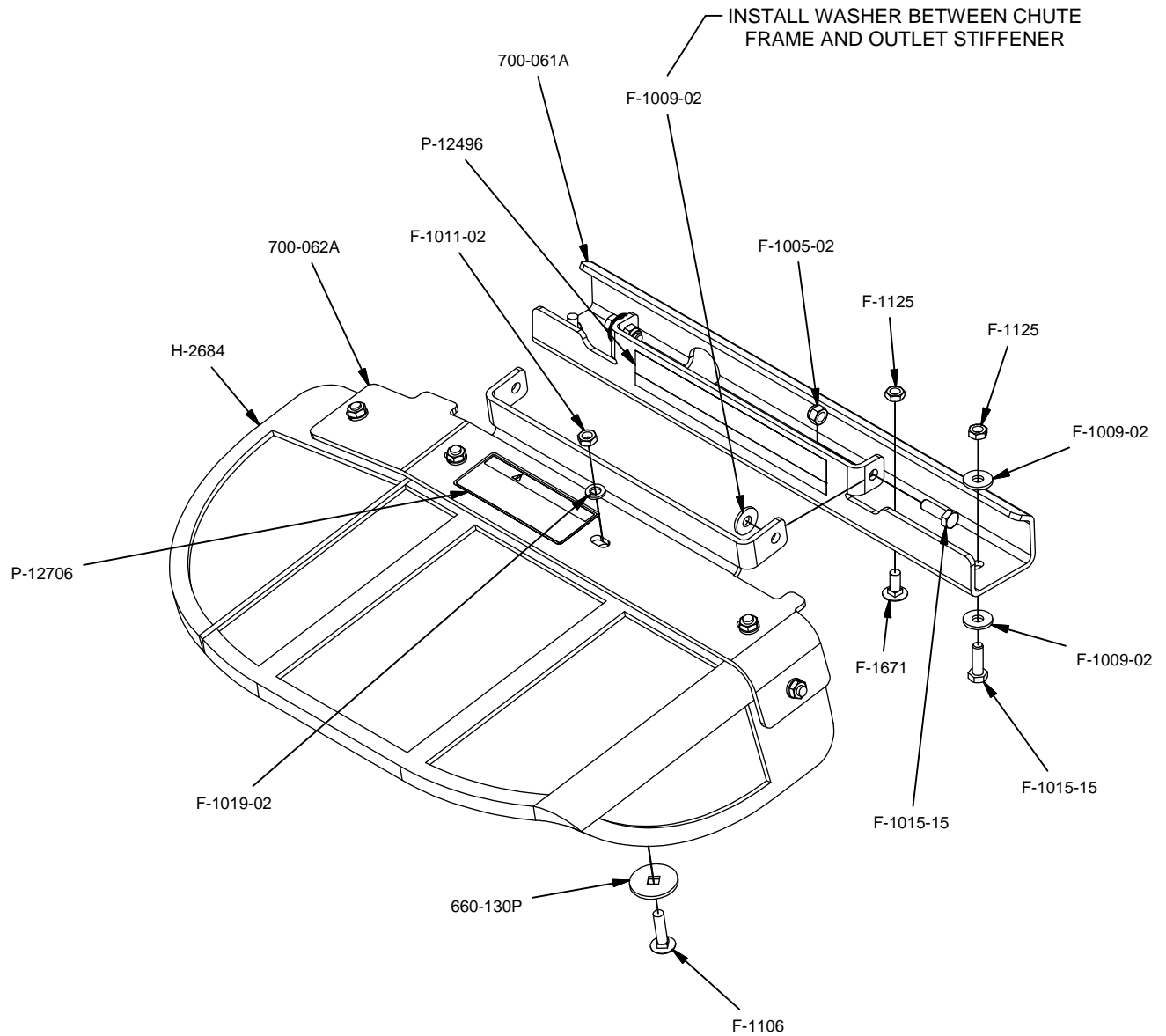


COMPLETE SPINDLE ASSEMBLY
WITHOUT BLADE, PULLEY & FASTENERS:
629FN-001A

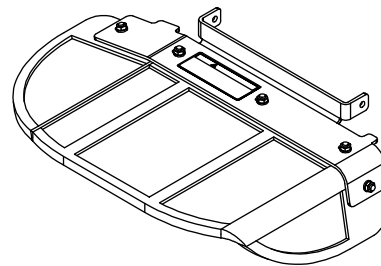
Spindle Parts List	
PART NUMBER	DESCRIPTION
609-034P	Spindle Spacer Washer
609-285P	CASTING,HSG,SPINDLE,HD
609-288P	DRIVER,BLADE,FRICION,SPL
609-289P	SHAFT,SPINDLE,HD
609-292P	CAP,BEARING
660-099P	WASHER,BLADE,5/8
D-3867	BRG,BALL,6206,F-SEALS
F-1019-03	3/8" LOCKWASHER
F-1572	3/8-24 x 1.5" Capscrew
F-1573	3/8-24 LOCKNUT
F-2073	HHCS,5/8-11X1.50,GR8,YZ
F-2078	NUT,3/4-16,TOP LOCK,GR-GT,YZ
H-2639	O'RING,-117,70 DURO
H-2707	GREASE, RYKOTAC 1/2 OZ. PACKET

- APPLIED TO THE TOP OF THE TOP BEARING.

RUBBER CHUTE ASSEMBLY

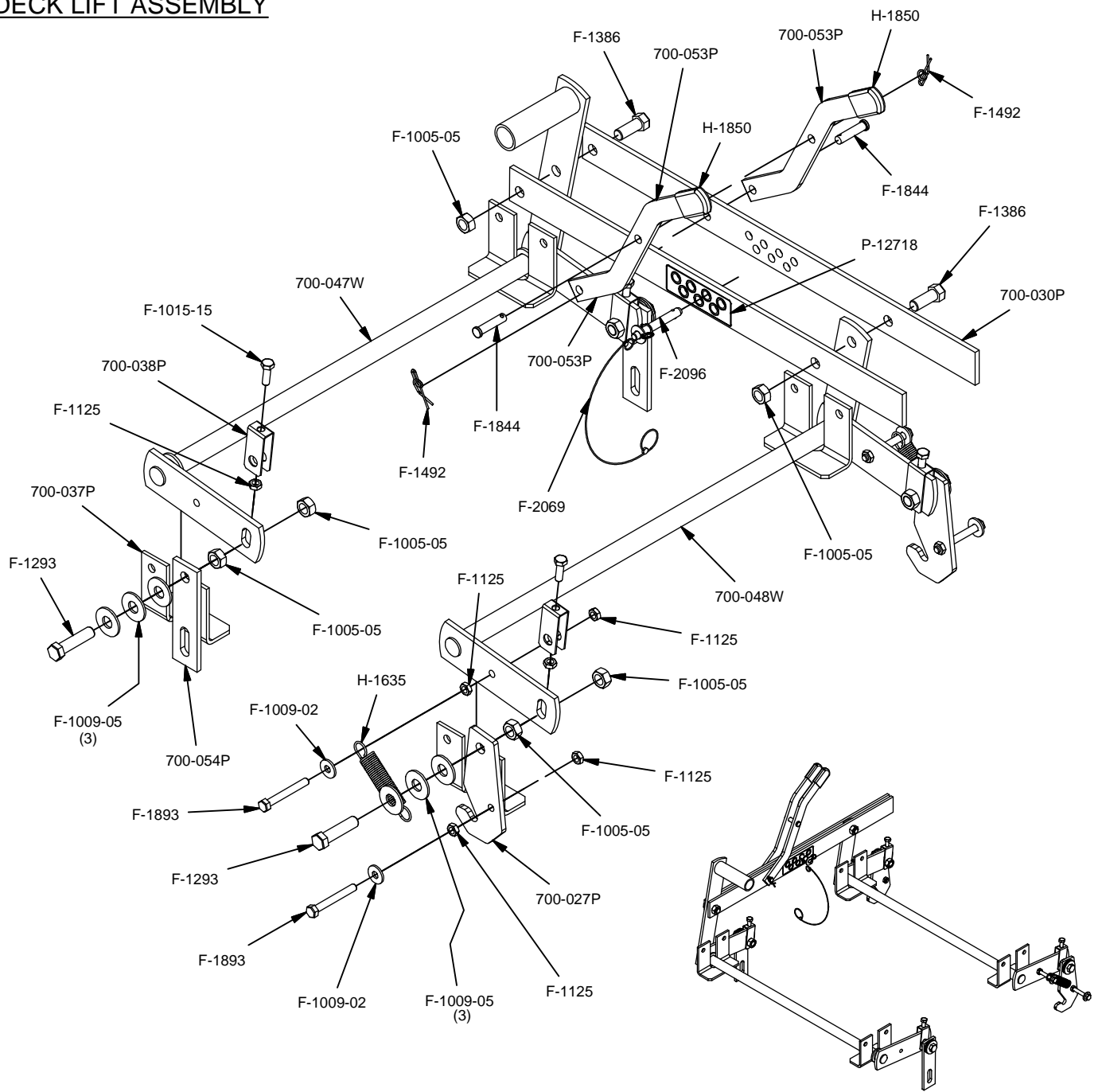


PART NUMBER	DESCRIPTION
660-130P	RUBBER CHUTE WASHER
700-061A	OUTLET STIFFENER ASSEMBLY
700-062A	CHUTE FRAME ASSEMBLY, SMALL
F-1005-02	5/16-18 Nyloc Nut
F-1009-02	5/16" Flat Washer
F-1011-02	5/16-18 Nut
F-1015-15	5/16-18 x 1" Capscrew
F-1019-02	5/16" LockWasher
F-1106	5/16-18 x 1-1/4" CARRIAGE BOLT
F-1125	5/16-18 Lock Nut
F-1671	5/16-18 x 3/4" CARRIAGE BOLT
H-2684	RUBBER CHUTE, 24" MOLDED
P-12496	DECAL, MISSING CHUTE
P-12706	WARNING DECAL, DISCHARGE CHUTE



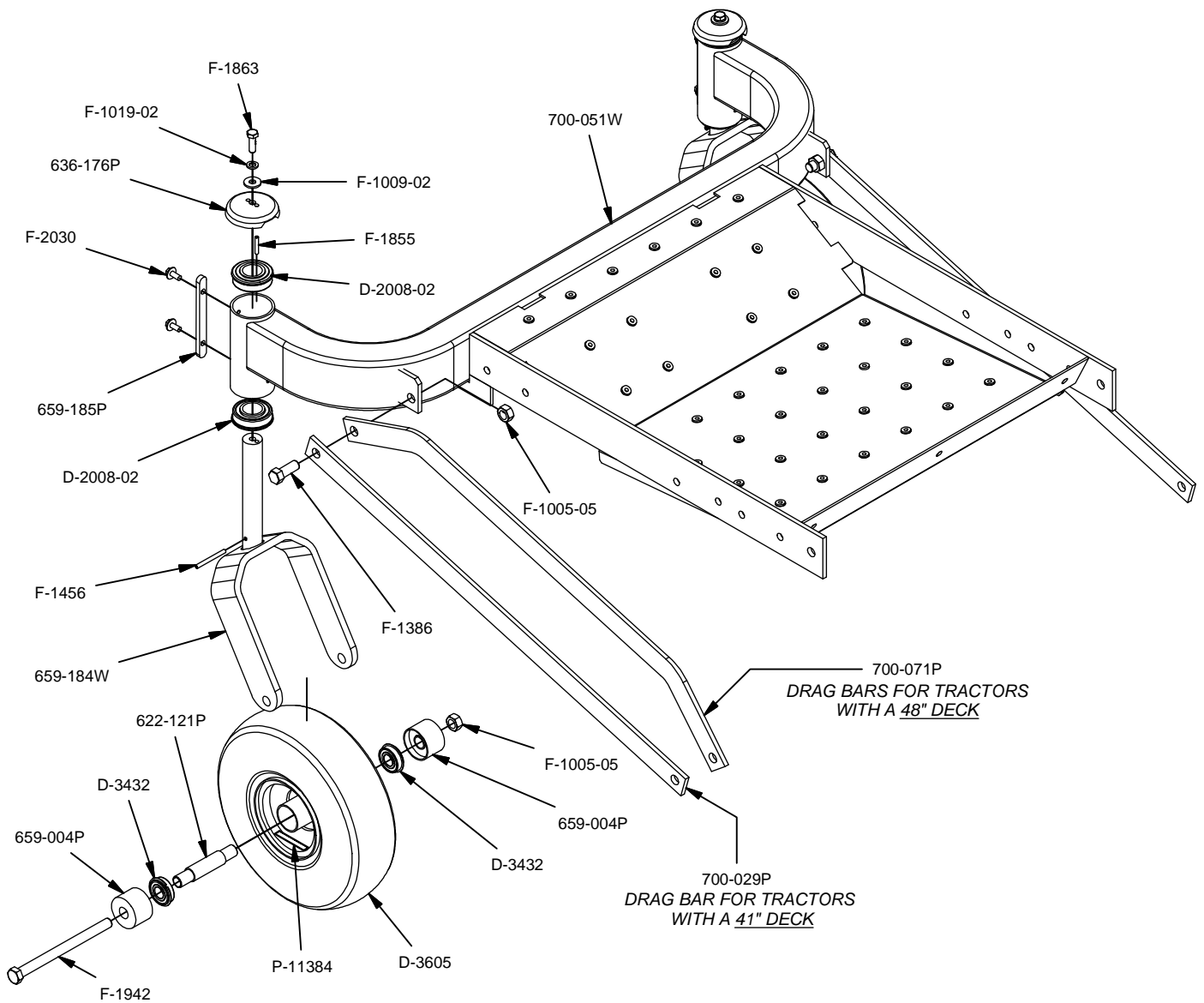
COMPLETE RUBBER CHUTE ASSEMBLY
WITHOUT OUTLET STIFFENER & FASTENERS:
660-122A

DECK LIFT ASSEMBLY



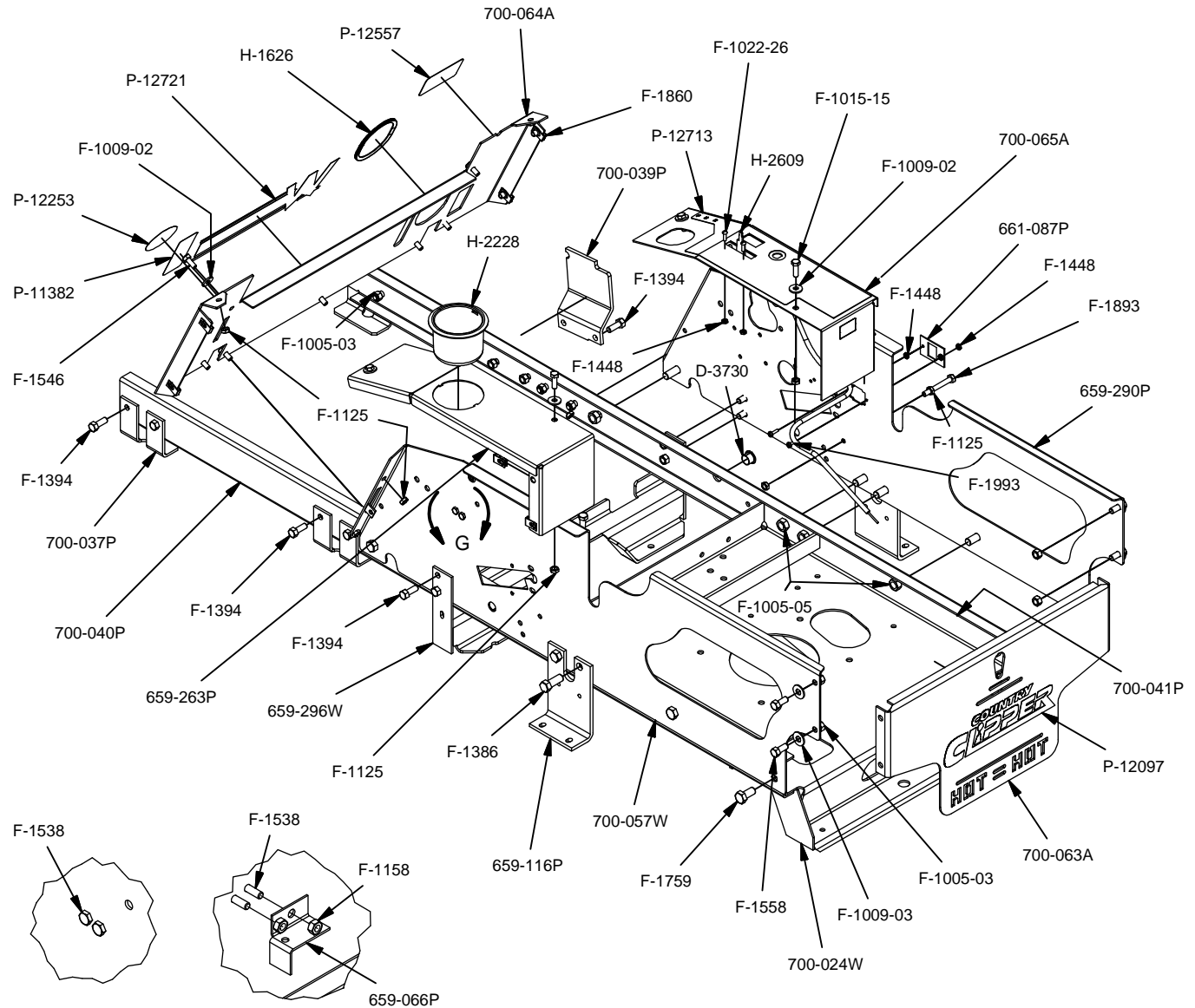
PART NUMBER	DESCRIPTION	PART NUMBER	DESCRIPTION
700-027P	HANGER, REAR	F-1125	5/16-18 Lock Nut
700-030P	LIFT BAR LINK	F-1293	1/2-13 x 2" Capscrew
700-037P	HANGER BRACKET, FLANGED	F-1386	1/2-13 x 1-1/4" Capscrew
700-038P	ADJUSTMENT SHACKLE	F-1492	5/16-3/8 Rue Ring
700-047W	DECK LIFT WLDMT, FRONT	F-1844	3/8 X 1-1/2 CLEVIS PIN
700-048W	DECK LIFT WLDMT, REAR	F-1893	5/16-8 x 2-1/2 Capscrew
700-053P	HEIGHT ADJUSTMENT HANDLE	F-2069	PLASTIC LANYARD
700-054P	HANGER PLATE	F-2096	LOCK PIN, POSITIVE 3/8 X 1-1/2
F-1005-05	1/2-13 Lock Nut	H-1635	SPRING, EXT, 3/4"OD X 4" OAL
F-1009-02	5/16" Flat Washer	H-1850	GRIP, VINYL
F-1009-05	1/2" FLAT WASHER	P-12718	CUT HEIGHT DECAL, WRANGLER
F-1015-15	5/16-18 x 1" Capscrew		

FRONT END ASSEMBLY



PART NUMBER	DESCRIPTION	PART NUMBER	DESCRIPTION
622-121P	Bearing Spacer	F-1005-05	1/2-13 Lock Nut
636-176P	Caster Cap	F-1009-02	5/16" Flat Washer
659-004P	Bearing Shield	F-1019-02	5/16" LockWasher
659-184W	Caster Mount Weldment	F-1386	1/2-13 x 1-1/4" Capscrew
659-185P	Stop Tab	F-1456	3/16 x 2" Spiral Pin
700-029P	DRAG BAR	F-1855	3/16 x 1" Roll Pin (Heavy Duty)
700-051W	FRONT AXLE WELDMENT	F-1863	5/16-18 x 1" Capscrew W/PATCH
700-071P	DRAG BAR, 48 WRANGLER	F-1942	1/2-13 x 6-1/2" Capscrew
D-2008-02	Bearing SF-16-32	F-2030	1/4 x 5/8 Self Tapping Capscrew
D-3432	Bearing 5/8" I.D. 1-3/8" O.D.	P-11384	Tire Pressure decal
D-3605	Caster tire		

FRAME AND SIDE ASSEMBLY

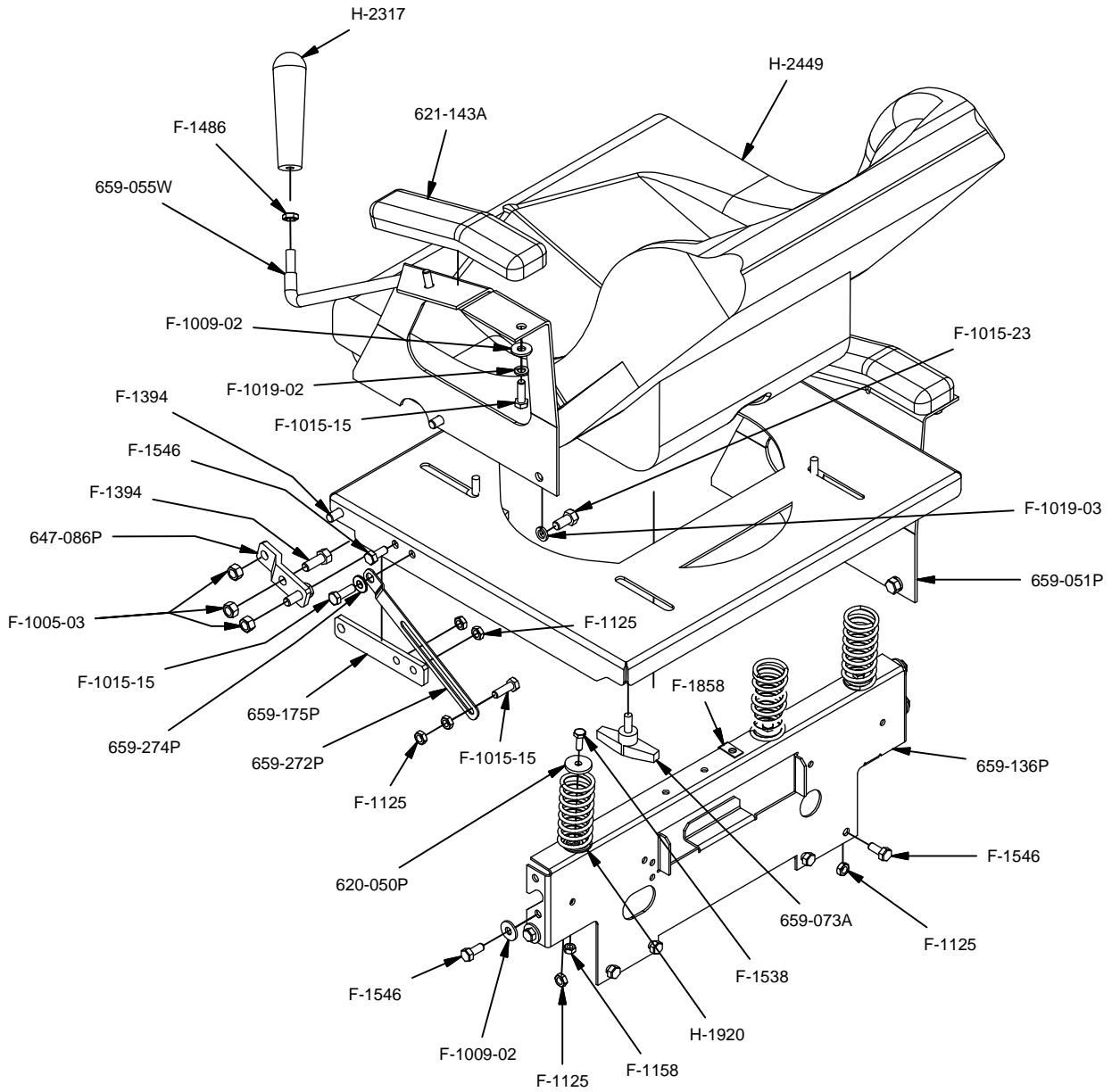


OUTSIDE SIDE PANEL INSIDE SIDE PANEL

DETAIL G

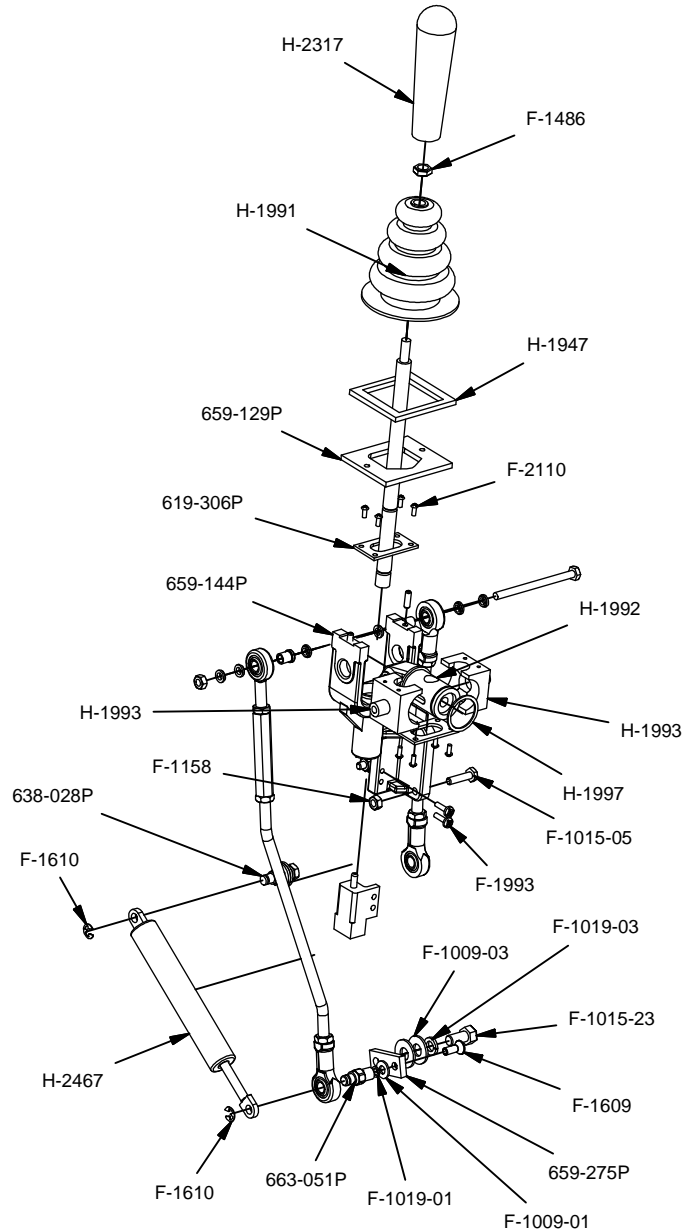
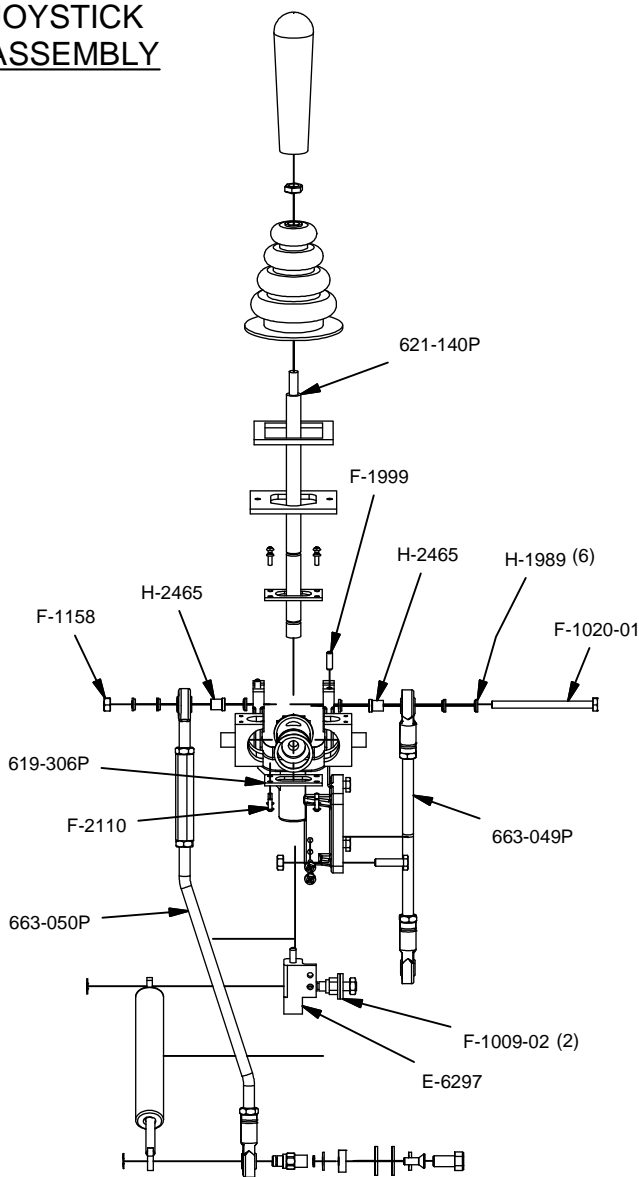
PART NUMBER	DESCRIPTION	PART NUMBER	DESCRIPTION	PART NUMBER	DESCRIPTION
659-066P	Tank Mount Clamp	700-065A	FENDER CAP ASSEMBLY, RH	F-1860	5/16-18 UNut
659-116P	Hydro Mount Bracket	F-1005-03	3/8-16 Lock Nut	F-1893	5/16-8 x 2-1/2 Capscrew
659-263P	Joystick LH Fender Cap	F-1009-02	5/16" Flat Washer	F-1993	#10-32 x 5/8 Phillips P.H.C.S.
659-290P	PANEL,SIDE,R	F-1009-03	3/8" Flat Washer	H-2228	Cup Holder
659-296W	WLDT,Transmission Brace	F-1015-15	5/16-18 x 1" Capscrew	H-2609	Throttle cable
661-087P	Fuse Mount Plate	F-1022-26	10-32 x 5/8" MachineScrew	P-10777	Patent Number decal
700-024W	Motor Mount Wldmt	F-1125	5/16-18 Lock Nut	P-11382	Brake On-Off Decal
700-037P	Hanger Bracket, Flanged	F-1158	1/4-20 Lock Nut	P-12097	Country Clipper decal
700-039P	LATCH STOP PLATE	F-1386	1/2-13 x1-1/4" Capscrew	P-12253	Made In The U.S.A. Decal
700-040P	FRAME RAIL (L)	F-1394	3/8-16 x 1" Capscrew	P-12557	Caution Fuel Decal
700-041P	FRAME RAIL (R)	F-1448	10-32 Nyloc Locknut	P-12713	Control Panel Decal
700-057W	SIDE PANEL WLDMT, LH	F-1546	5/16-18 x 3/4" Capscrew	P-12721	DECAL, WRANGLER
700-063A	Rear Engine Guard Assembly	F-1558	3/8-16 x 7/8" Capscrew		
700-064A	FRONT PANEL ASSEMBLY	F-1759	1/2-13 x 1" Capscrew		

SEAT AND RELATED PARTS



PART NUMBER	DESCRIPTION	PART NUMBER	DESCRIPTION
620-050P	Washer	F-1015-23	3/8-16 x 3/4" Capscrew
621-143A	Arm Rest Pad	F-1019-02	5/16" LockWasher
647-086P	FLIP SEAT MTG. TAB	F-1019-03	3/8" LOCKWASHER
659-005P	SEAT MOUNTING BASE	F-1125	5/16-18 Lock Nut
659-051P	ARM REST MOUNT RH	F-1158	1/4-20 Lock Nut
659-055W	ARM REST MOUNT LH	F-1394	3/8-16 x 1" Capscrew
659-073A	T HANDLE ASSEMBLY	F-1486	3/8-16 Jam Nut
659-136P	Seat Spring Support	F-1538	1/4-20 x 3/4" Capscrew
659-175P	Seat Hinge Tab	F-1546	5/16-18 x 3/4" Capscrew
659-272P	BAR, SEAT STOP	F-1858	1/4-20 "U"-Nut
659-274P	WASHER, PIVOT	H-1920	Seat Spring
F-1005-03	3/8-16 Lock Nut	H-2317	Handle Grip, Tapered
F-1009-02	5/16" Flat Washer	H-2449	Milsco Seat
F-1015-15	5/16-18 x 1" Capscrew		

JOYSTICK ASSEMBLY

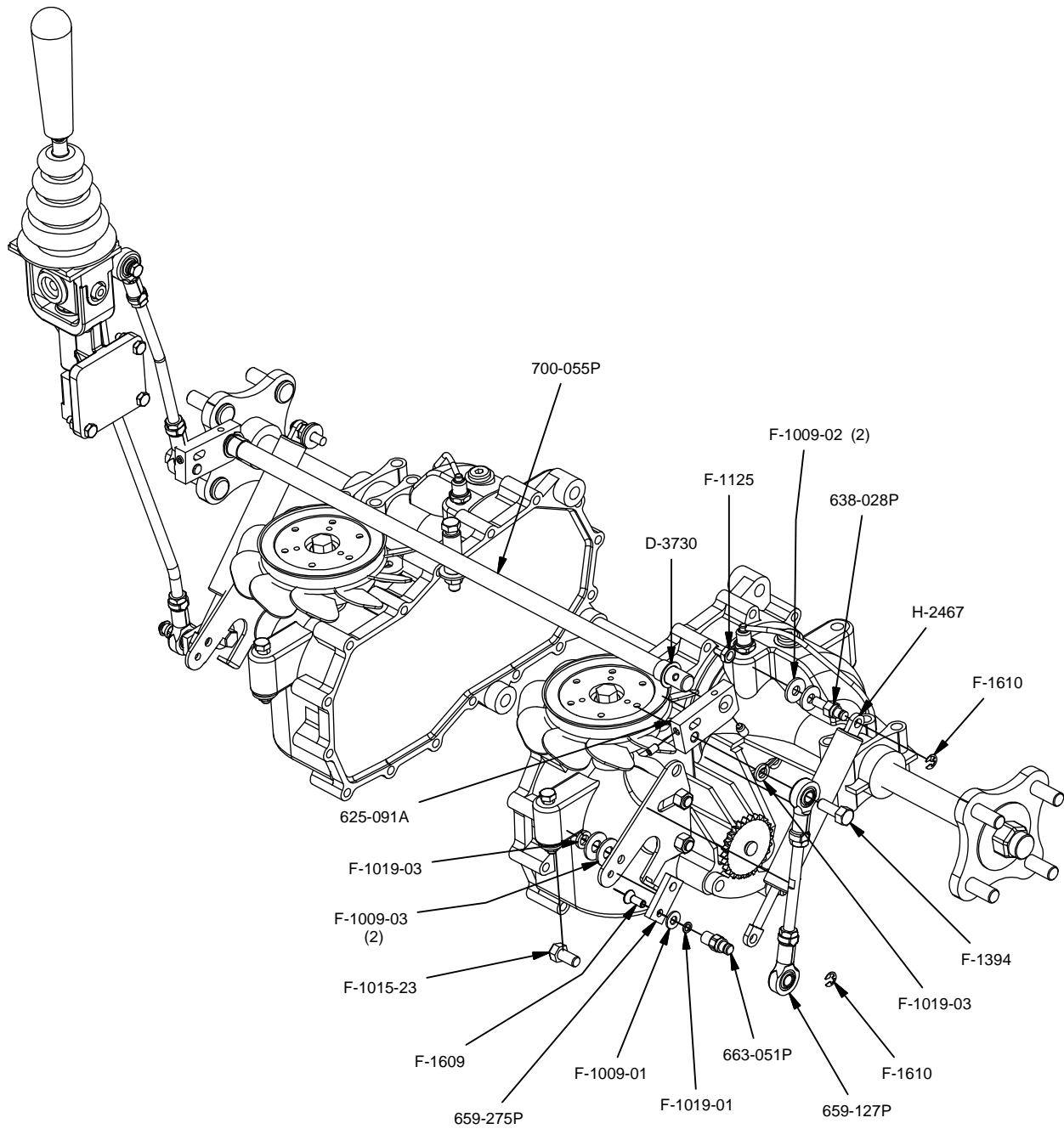


PART NUMBER	DESCRIPTION	PART NUMBER	DESCRIPTION
619-306P	Pivot Block Plate	F-1020-01	1/4-20 x 3-1/2" Capscrew
621-140P	Joystick Shaft Assembly	F-1158	1/4-20 Lock Nut
638-028P	Damper Bolt, 5/16-18 X 3/4"	F-1486	3/8-16 Jam Nut
659-129P	Joystick Top Plate	F-1609	1/4-20 x 3/4" F.H.C.S.
659-144P	JOYSTICK LEVER CONTROL YOKE	F-1610	E-Ring for 1/4" Shaft
659-275P	Tracking Adjustment Cam	F-1993	#10-32 x 5/8 Phillips P.H.C.S.
663-049P	Steering Link, Short	F-1999	Roll Pin, 3/16 X 5/8
663-050P	Steering Link, Long	F-2110	#6 X 1/2" Screw
663-051P	Damper Stud (Female)	H-1947	Gasket, Foam
E-6297	Brake Switch	H-1989	Ball Joint Bushing
F-1009-01	1/4" Flat Washer	H-1991	JoyStick Boot
F-1009-02	5/16" Flat Washer	H-1992	Pivot Shaft
F-1009-03	3/8" Flat Washer	H-1993	Pivot Block
F-1015-05	1/4-20 x 1" Capscrew	H-1997	Snap Ring
F-1015-23	3/8-16 x 3/4" Capscrew	H-2317	Grip Handle, Tapered
F-1019-01	1/4" LockWasher	H-2465	ADAPTER, ROD END, LONG
F-1019-03	3/8" LOCKWASHER	H-2467	Dual Action Damper

JOYSTICK ASSEMBLY:
647-122A

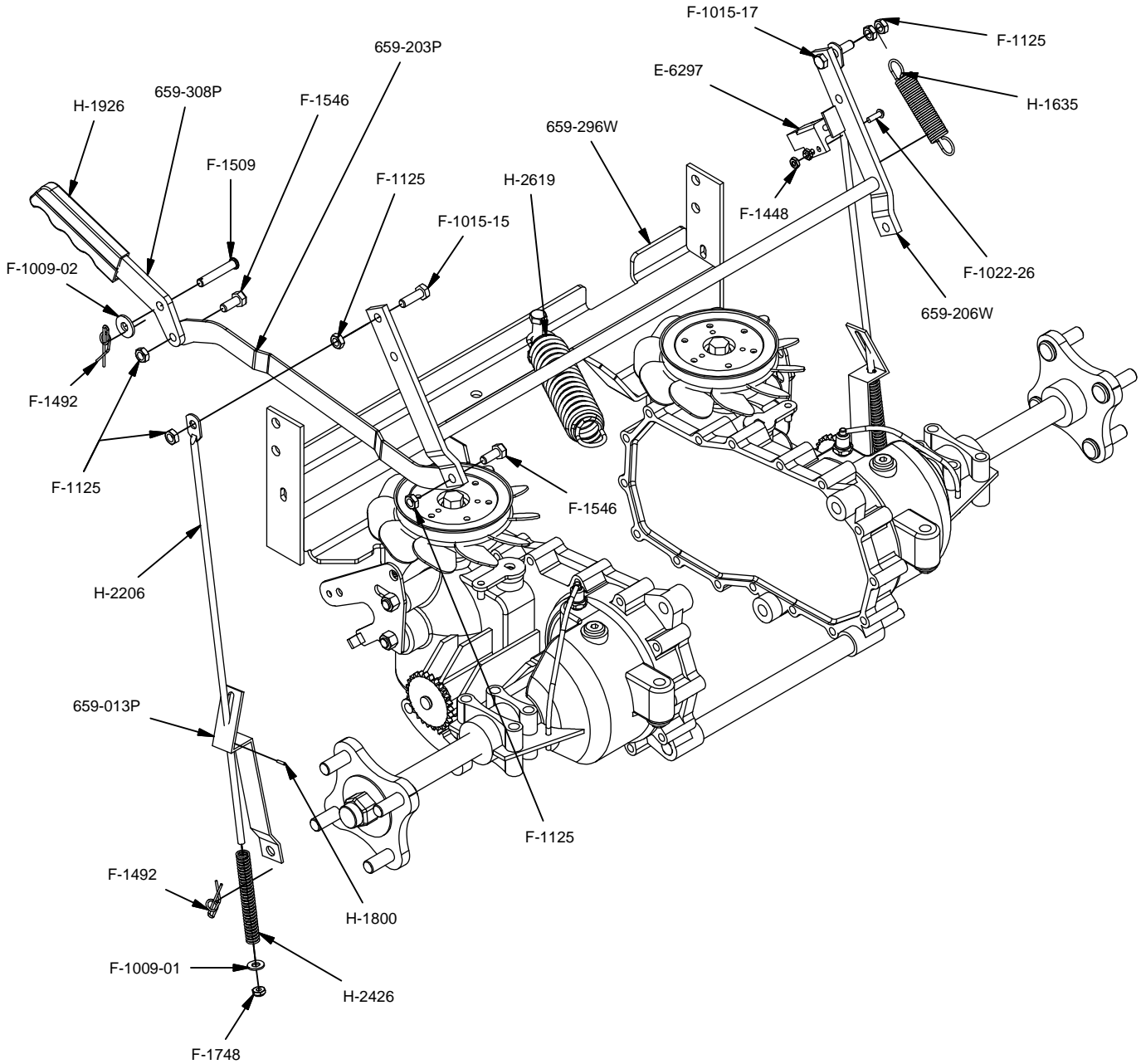
JOYSTICK REPAIR KIT:
612-332A

JOYSTICK STEERING ASSEMBLY



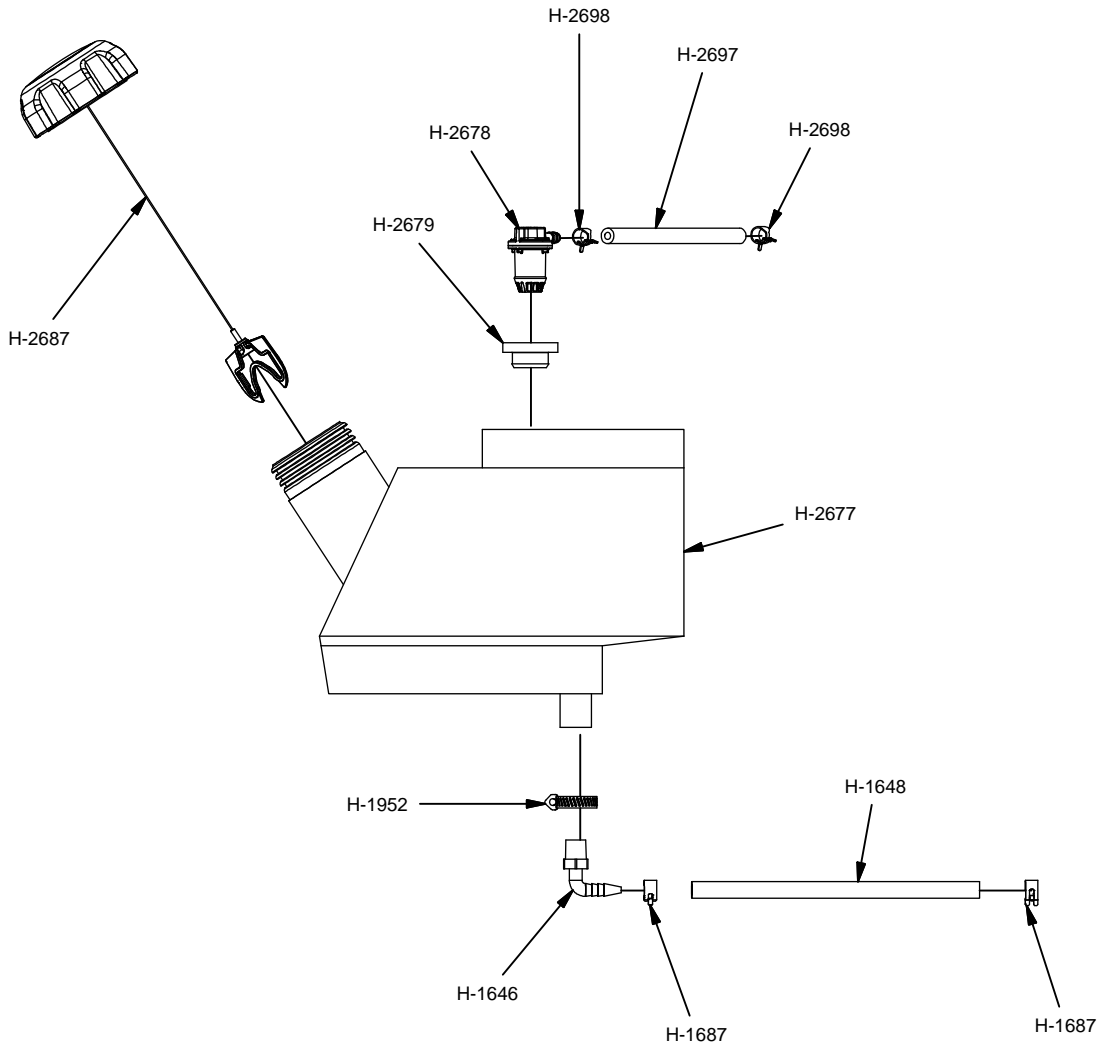
PART NUMBER	DESCRIPTION	PART NUMBER	DESCRIPTION
625-091A	ARM, SWIVEL, S/A	F-1009-03	3/8" Flat Washer
638-028P	Damper Bolt, 5/16-18 X 3/4"	F-1015-23	3/8-16 x 3/4" Capscrew
659-127P	Linkage Rod (Short)	F-1019-01	1/4" LockWasher
659-275P	Tracking Adjustment Cam	F-1019-03	3/8" LOCKWASHER
663-051P	Damper Stud (Female)	F-1125	5/16-18 Lock Nut
700-055P	ROD, SHIFT CROSS	F-1394	3/8-16 x 1" Capscrew
D-3730	Flanged Bushing 5/8" Bore	F-1609	1/4-20 x 3/4" F.H.C.S.
F-1009-01	1/4" Flat Washer	F-1610	E-Ring for 1/4" Shaft
F-1009-02	5/16" Flat Washer	H-2467	Dual Action Damper

BRAKE ASSEMBLY



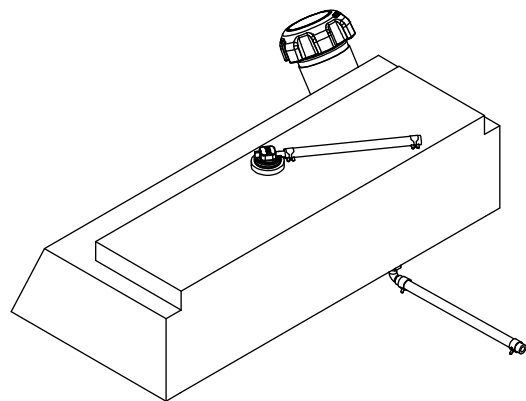
PART NUMBER	DESCRIPTION	PART NUMBER	DESCRIPTION
659-013P	Lower Brake Link	F-1448	10-32 Nyloc Locknut
659-203P	BRAKE LINK	F-1492	5/16-3/8 Rue Ring
659-206W	BRAKE ROD WLDT	F-1509	5/16 x 1 3/4" Clevis Pin
659-296W	WLDT, TRANSMISSION BRACE	F-1546	5/16-18 x 3/4" Capscrew
659-308P	BRAKE HANDLE, FLAT	F-1748	1/4-20 thin nyloc nut
E-6297	Brake Switch	H-1635	SPRING, EXT, 3/4"OD X 4" OAL
F-1009-01	1/4" Flat Washer	H-1800	3/32 x 3/8" Roll Pin
F-1009-02	5/16" Flat Washer	H-1926	1/4"x1" Handle Grip
F-1015-15	5/16-18 x 1" Capscrew	H-2206	Brake Link Rod
F-1015-17	5/16-18 x 1-1/2" Capscrew	H-2426	.372 x 3.69 Spring
F-1022-26	10-32 x 5/8" MachineScrew	H-2619	SPRING, 5 X 1-1/2, TAPERED ENDS
F-1125	5/16-18 Lock Nut		

FUEL TANK ASSEMBLY

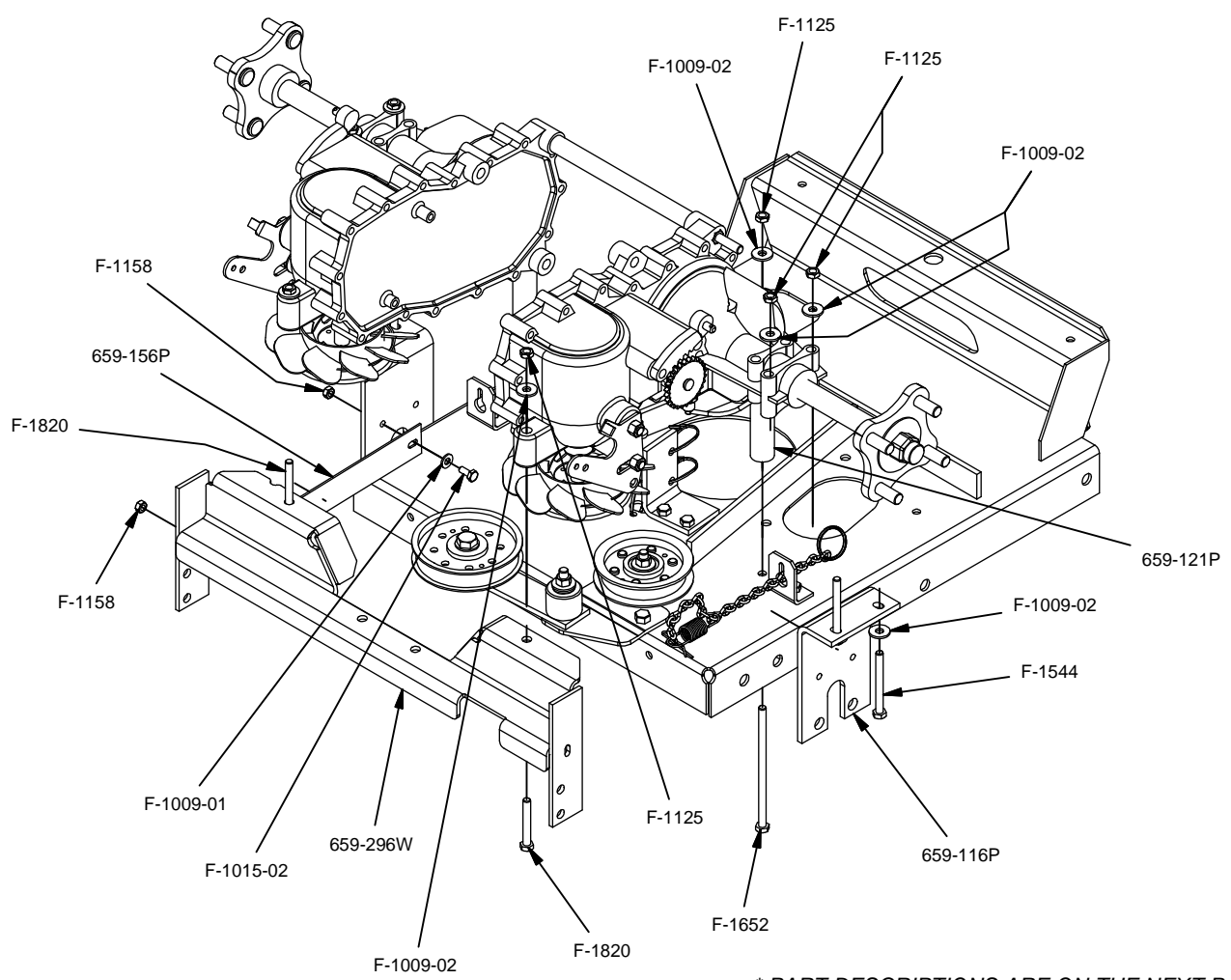
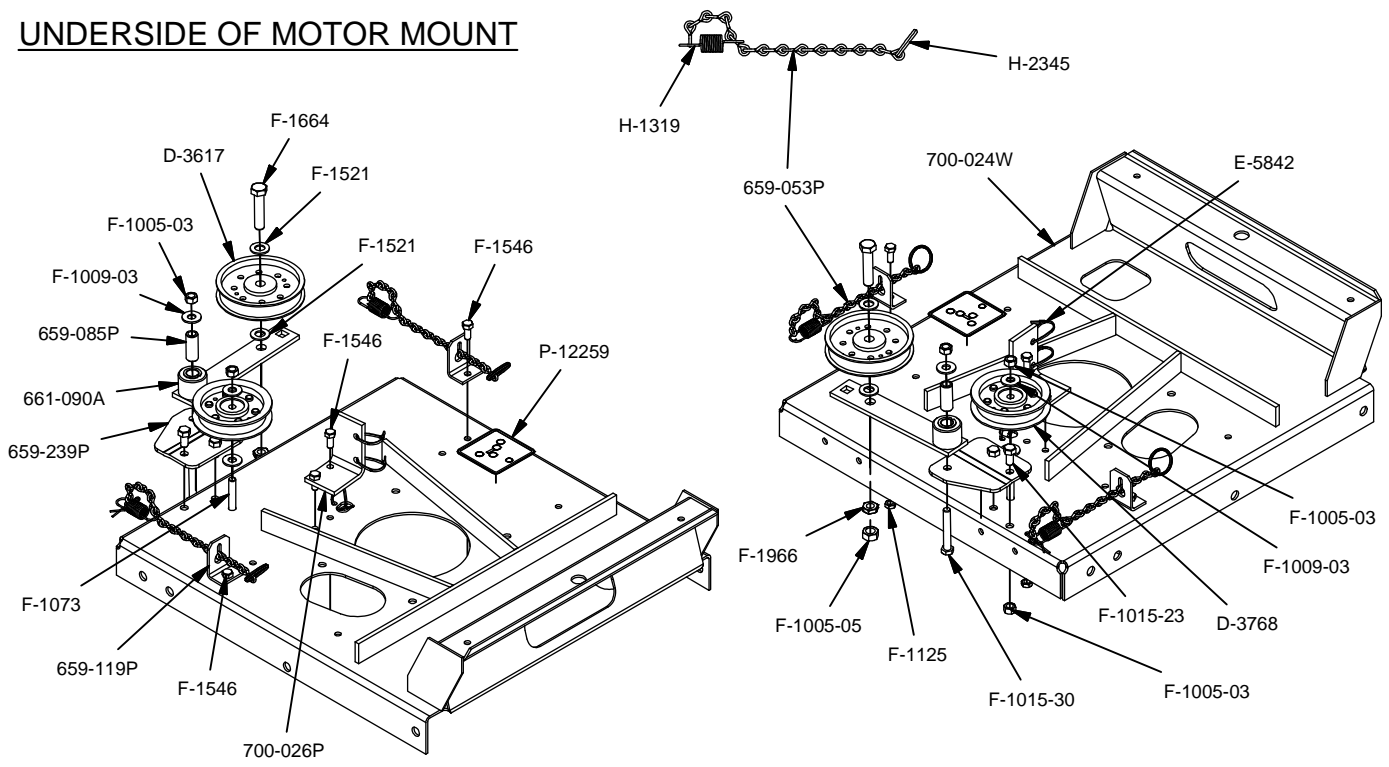


FUEL TANK ASSEMBLY:
659-306A

PART NUMBER	DESCRIPTION
H-1646	1/4 x 1/4" 90 Degree Nylon Elbow
H-1648	Fuel Line
H-1687	1/2 O.D. Hose Spring Clamp
H-1952	1.87" Hose Clamp
H-2677	Gas Tank, 4 1/2 Gallon Vented
H-2678	Remote Vent
H-2679	KELCH REMOTE VENT GROMMET
H-2687	Ratchet Cap w/ 8" Tether
H-2697	HOSE, FUEL LINE .188 ID X .406 OD
H-2698	CLAMP, .406 OD FUEL LINE



UNDERSIDE OF MOTOR MOUNT

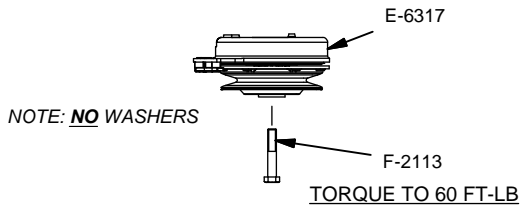


* PART DESCRIPTIONS ARE ON THE NEXT PAGE.

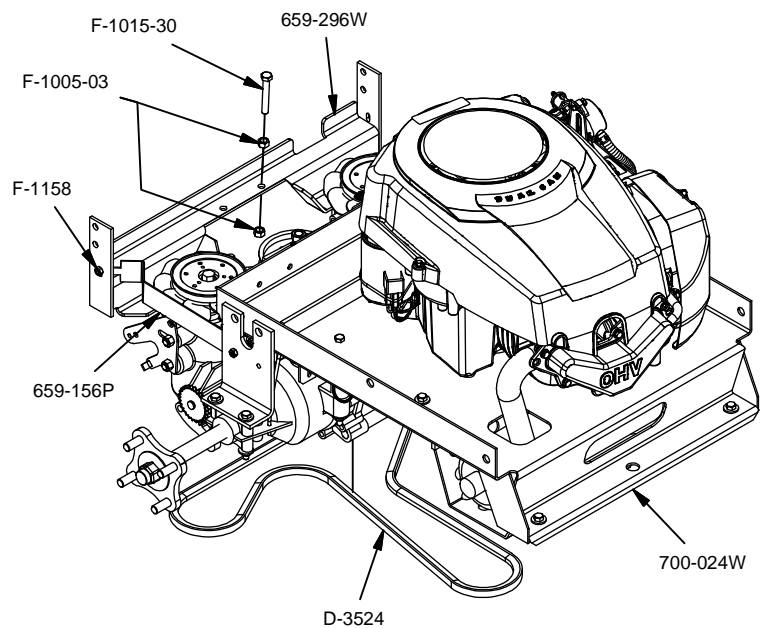
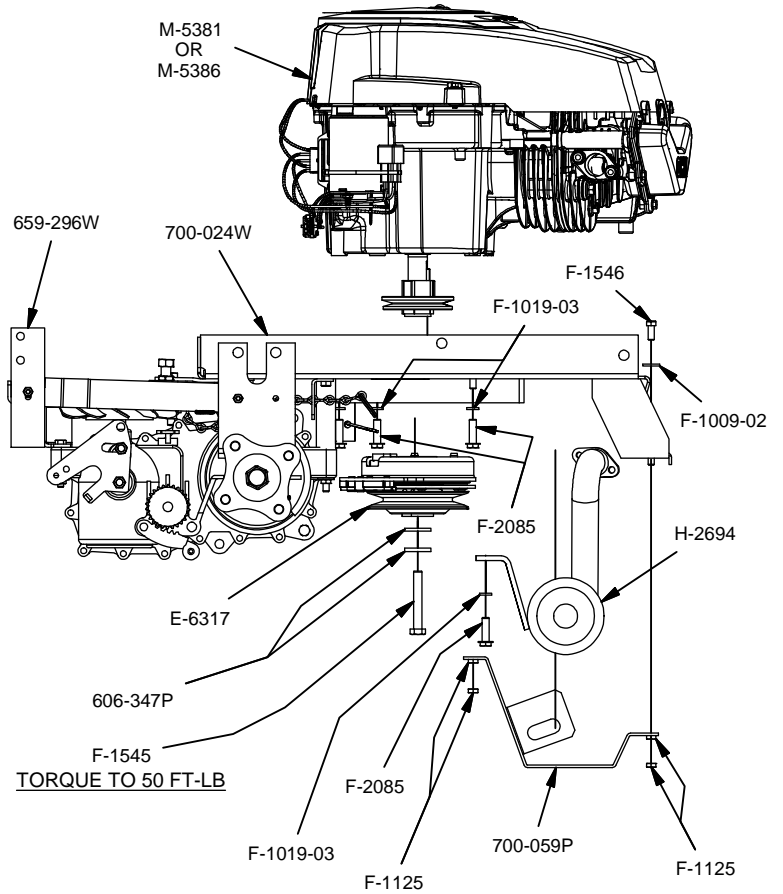
CLUTCH MOUNTING FOR MOWERS WITH THE FOLLOWING SERIAL NUMBERS:

MOTOR AND MOUNT ASSEMBLY

700A389 - AND CONTINUING IN SEQUENTIAL ORDER
700B148 - AND CONTINUING IN SEQUENTIAL ORDER
700C60 - AND CONTINUING IN SEQUENTIAL ORDER
700D1 - AND CONTINUING IN SEQUENTIAL ORDER

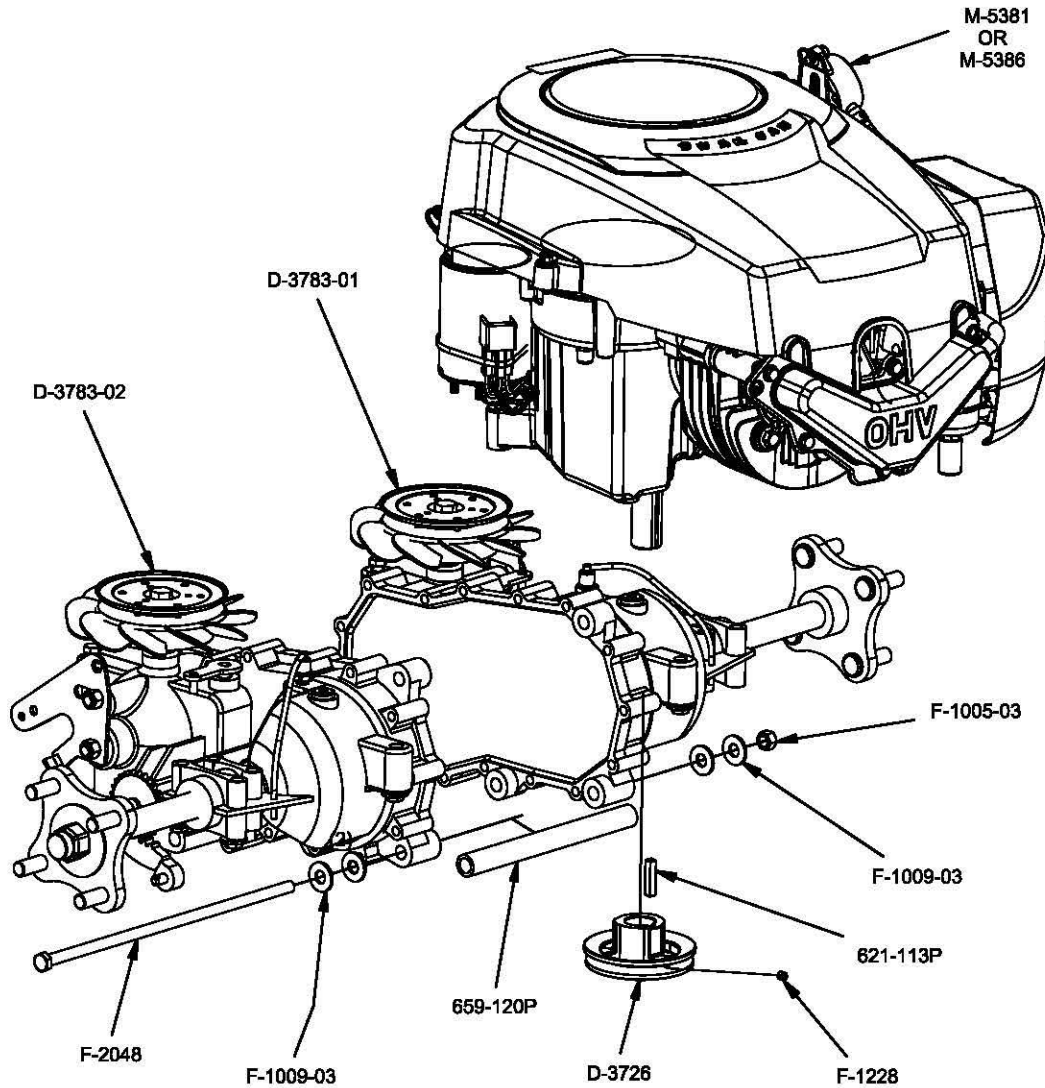


PART NUMBER	DESCRIPTION
606-347P	15/32" ID WASHER
659-085P	Mounting Pin
659-116P	Hydro Mount Bracket
659-119P	Free Wheel Anchor
659-121P	Rear Hydro Brace
659-156P	Fan Shroud
659-239P	Bolt On Idler Mount Tab
659-296W	WLDT, TRANSMISSION BRACE
661-066P	Free Wheel Chain
661-090A	Idler Arm Assembly
700-024W	Motor Mount Wldmt 18.5 & 20HP
700-026P	CLUTCH STOP
700-059P	MUFFLER GUARD
D-3524	Kevlar "V"-Belt #A-71
D-3617	4" Idler Pulley 1/2" Bore
D-3768	Pulley 3.5 X 1" wide
E-5842	Wire Tie
E-6317	Clutch/Brake 1" Bore
F-1005-03	3/8-16 Lock Nut
F-1005-05	1/2-13 Lock Nut
F-1009-01	1/4" Flat Washer
F-1009-02	5/16" Flat Washer
F-1009-03	3/8" Flat Washer
F-1015-02	1/4-20 x 5/8" Capscrew
F-1015-23	3/8-16 x 3/4" Capscrew
F-1015-30	3/8-16 x 2-1/2" Capscrew
F-1019-03	3/8" LOCKWASHER
F-1125	5/16-18 Lock Nut
F-1158	1/4-20 Lock Nut
F-1492	5/16-3/8 Rue Ring
F-1521	1/2" WASHER, CUSTOM
F-1544	5/16-18 x 3" Capscrew
F-1545	7/16-20 x 3" Capscrew
F-1546	5/16-18 x 3/4" Capscrew
F-1652	5/16-18 x 6" Capscrew
F-1664	1/2-13 x 2-1/4" Capscrew
F-1820	5/16-18 x 2-1/4" Capscrew
F-1966	1/2-13 THIN NYLOC NUT
F-2085	3/8-16 x 1-1/4" Bolt, Self-Tapping
F-2113	7/16-20 x 2-1/2" HHCS GR8
H-1319	Spring
H-2345	Split Ring
H-2694	Muffler for 18.5HP & 20HP Kohler
M-5381	KOHLER 18 HP Single Cylinder
M-5386	KOHLER 22 HP Single Cylinder
P-12259	Belt Routing Decal



KOHLER 18HP Single Cylinder Motors used with 41" Decks
 KOHLER 22HP Single Cylinder Motors used with 48" Decks

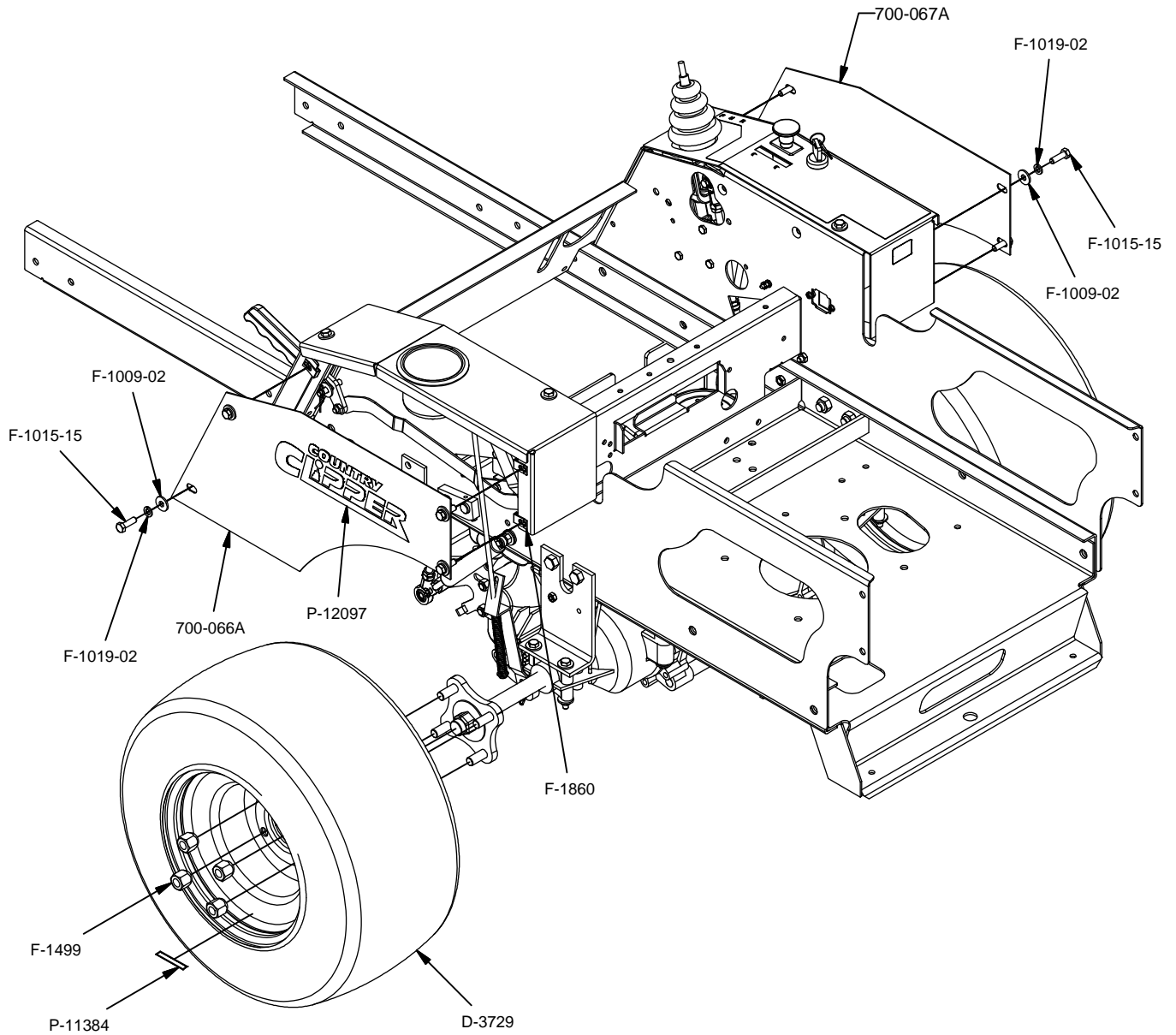
MOTOR AND TRANSAXLE



PART NUMBER	DESCRIPTION
621-113P	1/4"sq x 1-1/4" Key
659-120P	Hydro Brace
D-3726	Engine Pulley 3.75"
D-3783-01	Transaxle 7" Fan RH
D-3783-02	Transaxle 7" Fan LH
F-1005-03	3/8-16 Lock Nut
F-1009-03	3/8" Flat Washer
F-1228	1/4-20 x 1/4" Set Screw W/Nylon Patch
F-2048	3/8-16 x 12" Hex Bolt
M-5381	KOHLER 18 HP Single Cylinder
M-5386	KOHLER 22 HP Single Cylinder

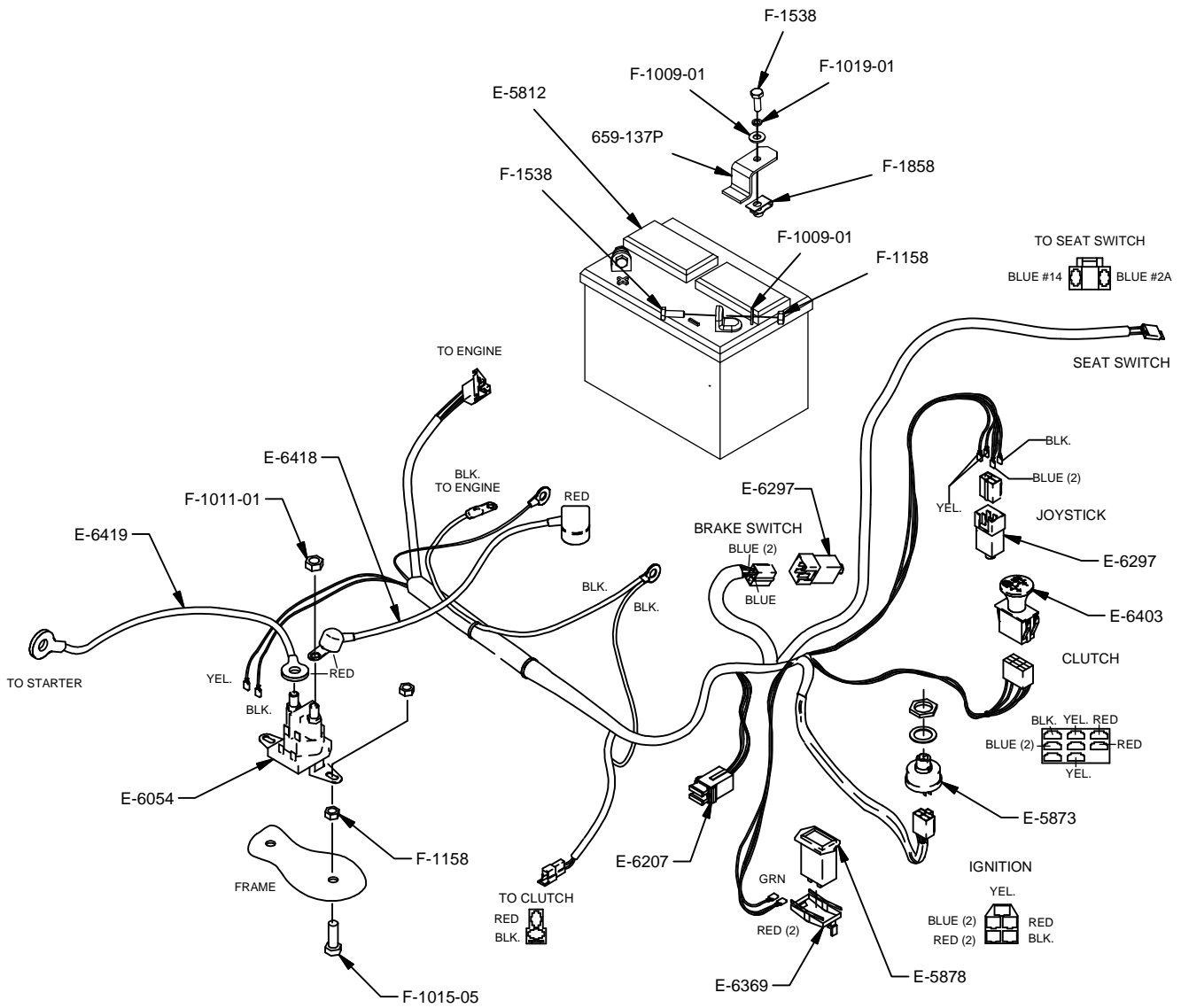
*KOHLER 18HP Single Cylinder Motors used with 41" Decks
 KOHLER 22HP Single Cylinder Motors used with 48" Decks*

REAR WHEEL AND SIDE PANEL



PART NUMBER	DESCRIPTION
700-066A	Fender Skirt Assembly, LH
700-067A	Fender Skirt Assembly, RH
D-3729	18 x 8.5-8 Tire and Rim
F-1009-02	5/16" Flat Washer
F-1015-15	5/16-18 x 1" Capscrew
F-1019-02	5/16" LockWasher
F-1499	1/2-20 Lug Nut
F-1860	5/16-18 UNut
P-11384	Tire Pressure decal
P-12097	Country Clipper decal

WIRE HARNESS & BATTERY



WIRE HARNESS ASSEMBLY
E-6405

PART NUMBER	DESCRIPTION	PART NUMBER	DESCRIPTION
659-137P	Battery Hold Down	E-6418	CABLE, BATTERY TO SOLENOID
E-5812	12 Volt Battery YSP 30	E-6419	CABLE, SOLENOID TO ENGINE
E-5873	START SWITCH	F-1009-01	1/4" Flat Washer
E-5878	HOUR METER	F-1011-01	1/4-20 NUT
E-6054	SOLENOID	F-1015-05	1/4-20 X 1 HHCS
E-6207	FUSE, #ATC-30	F-1019-01	1/4" LockWasher
E-6281	COVER, KEY SWITCH	F-1158	1/4-20 Stover Nut
E-6297	BRAKE SWITCH	F-1538	1/4-20 x 3/4" Capscrew
E-6369	RETAINER CLIP	F-1858	1/4-20 "U"-Nut
E-6403	CLUTCH SWITCH		